

# Warsaw

## Missouri

**Truman Lake & the Osage Arm  
of the Lake of the Ozarks**



**2024/2025**

**[www.welcometowarsaw.com](http://www.welcometowarsaw.com)**



# ADVANTAGE REAL ESTATE



**Pam Grobe**  
660-525-0740  
[WWW.PAMATTHELAKE.COM](http://WWW.PAMATTHELAKE.COM)



**Mary Shinn**  
660-221-7603



**Lea Ann Petree**  
816-838-2534

***Nationwide Exposure For Listings***

**1699 A Commercial St**

**Warsaw, MO •660-438-0070**

**[www.advantageland.info](http://www.advantageland.info)**





# Fajen

Insurance Agency, LLC

**Rick Fajen, Agent**

**HOME • AUTO • LIFE  
FARM • LIABILITY • HEALTH  
BUSINESS • WORKMANS COMP**

**660-438-3800**

**601 Commercial Street, Suite #1  
Warsaw, MO 65355**

**rfajen@fajenins.com**



**LARGE ENOUGH TO SERVE - SMALL ENOUGH TO CARE.**



# Dedicated to Providing You Our Golden Standard of *Care.*

## Top-Rated Providers



Highly trained,  
friendly medical experts.

## Personalized Care You Need



Full range of services  
and specialty care.

## Conveniently Located Facilities



High tech facilities  
close to you.



[gvmh.org](http://gvmh.org) | [@chooseGVMH](https://www.instagram.com/chooseGVMH)

Clinton | Osceola | Warsaw | Windsor  
660.890.7300



# Table of Contents

Our Warsaw... 8

Our Events... Page 9

Our Hunting & Fishing... 10

Our History & Heritage... 12

Our Tourism... 13

Our Economic Development... 14

Our Schools... 15

Our Shopping... 19

Our Parks & Trails... 20

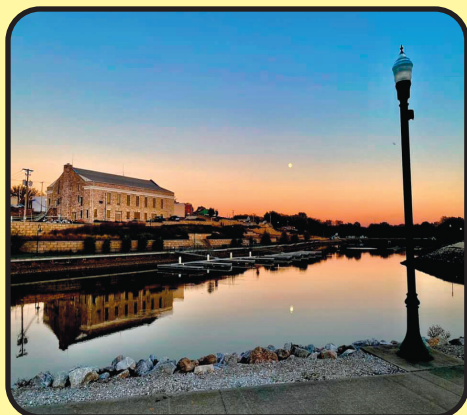
Our Good Eats... 21

Move to Warsaw... 41

Numbers to Know... 45



181 West Harrison St.  
Warsaw, Missouri 65355  
(660) 438-5922  
[www.welcometowarsaw.com](http://www.welcometowarsaw.com)



Publisher:  
James Mahlon White  
Editor:  
Adam Howe  
Advertising & Sales:  
Mac Vorce  
Graphic Design:  
Jenn Bradshaw & Stephanie Adair



This Guide is Proudly Provided by:  
**Warsaw Area Chamber of Commerce**  
(660) 438-5922  
[www.welcometowarsaw.com](http://www.welcometowarsaw.com)

Produced and Printed by:  
**The Benton County Enterprise**  
(660) 438-6312  
[www.bentoncountyenterprise.com](http://www.bentoncountyenterprise.com)

**Welcome to  
Warsaw**

FOR UPDATED INFORMATION ON  
UPCOMING EVENTS, PLEASE VISIT  
[WWW.WELCOMETOWARSAW.COM](http://WWW.WELCOMETOWARSAW.COM)



The Warsaw Chamber of Commerce means business. We are here to put people in touch with the services they are seeking. We help promote our area and drive business to our members. We believe a strong Chamber is a strong community.

The Board of Directors are in a unique position to help our businesses and community grow. The Warsaw Chamber of Commerce develops, promotes and advocates for our business community. We help provide resources for relevant, innovative and impactful programming.

Invest in home and become a member. We make a difference!

**\*\*Warsaw Chamber of Commerce\*\***

## Warsaw Chamber of Commerce Board of Directors



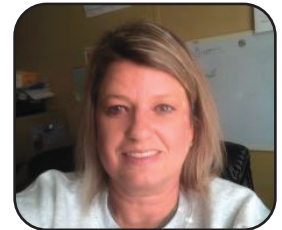
Whitney Day  
President



Jennifer Flores  
Secretary



Michael Schnakenberg  
Treasurer



Eryn Kellner



Vanessa Shinn



Charlie McGann



Tracy Amos



James White



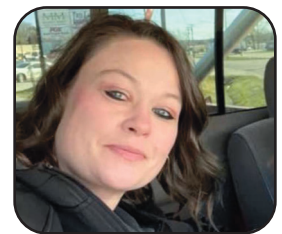
Josh Sater



Jerry Waters



Dustin Gemes



Michelle Givens-Branson



# LONG SHOAL MARINA

TRUMAN  
LAKE

Boat Rentals  
Slip Rentals  
Jet Ski Rentals

Fuel

Full Service Restaurant  
Lake Life Supplies

Fun!

Now serving Hunt Brothers Pizza!

Marina (660) 438-2841

Service (660) 438-3030

12878 Steamboat Rd.

Warsaw, MO 65355

[www.longshoalmarina.com](http://www.longshoalmarina.com)



## HIDDEN OAKS RANCH

### Cabin Getaways

20918 Doe Trail, Warsaw, MO  
**660-723-6400**



Secluded & Private campground just minutes away from Truman Lake & Lake of the Ozarks where adventure awaits you!

#### Cabin Amenities:

Linens & Towels • Kitchens w/everything • Shower/Bathroom • A/C & Heating • BBQ Grills • Picnic Tables • Fire Pits w/free firewood • Short Trails • Fish Cleaning Area • Lighted outdoor lounge area for frying.

**EXPLORE - RELAX - ENJOY**

[www.hiddenoakscabins.com](http://www.hiddenoakscabins.com)

Reservations made by calling H.O.R. or through Airbnb.

# R&C Adventures

## LOG CABIN RENTALS BY TRUMAN LAKE



Open All Year!  
Free WiFi!  
Playground!  
Horseshoe pit!

*The Number One Comfort Stop For The Whole Family  
To Come Relax, Fish, Hunt, & Enjoy The Outdoors!*

**660-438-5933**

CONVENIENTLY LOCATED NEAR **TRUMAN LAKE**,  
ONLY ONE MILE NORTH OF LONG SHOAL MARINA!

12049 Hwy 7, Warsaw MO

[RCAdventureCabins.com](http://RCAdventureCabins.com)

[RandCAventures65355@gmail.com](mailto:RandCAventures65355@gmail.com)





## Our Warsaw...

As Mayor of the City of Warsaw it is my pleasure to welcome you to wet, wild, wonderful Warsaw! I encourage those of you visiting Warsaw to experience all the things that make our town such a special place.

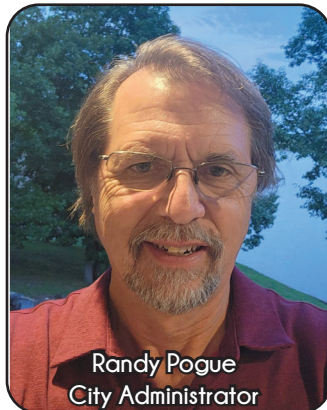
Warsaw is located at the confluence of the two largest lakes in Missouri: Truman Lake and Lake of the Ozarks. Here you can enjoy an abundance of outdoor activities, such as boating and water sports, fishing and hunting, golf, camping, hiking, biking, and disc golf.

Come to Drake Harbor by boat or car where you can walk, jog, or bike along 12 miles of the scenic Osage River with access to our revitalized downtown. Warsaw is also home to many festivals. Last but not least are the people of Warsaw. They are our greatest asset and make Warsaw a special place to live.

Sincerely,  
Eddie Simons, Mayor of Warsaw

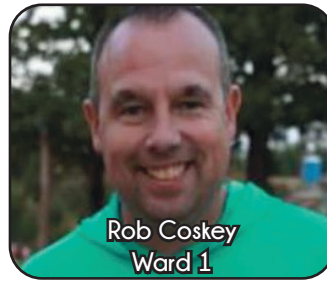


Eddie Simons  
Mayor



Randy Pogue  
City Administrator

## City Council



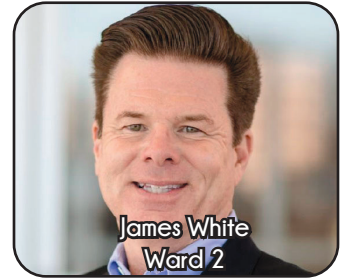
Rob Coskey  
Ward 1



Reba Slavens  
Ward 1



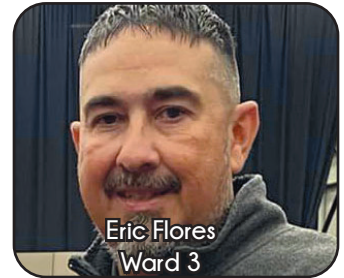
Lou Breshears  
Ward 2



James White  
Ward 2



Adam Howe  
Ward 3



Eric Flores  
Ward 3

**LAKES INN**  
Warsaw  
1603 Commercial St.  
JCT Hwy 65 & Hwy 7  
Warsaw, MO 65355  
JUST OFF HIGHWAY 7 IN WARSAW

- Free Continental Breakfast
- Military Discount- Active & Retired
- Outdoor Seasonal Pool
- Large Trailer & Boat Parking
- Free boat hook-ups
- Free Wireless Internet



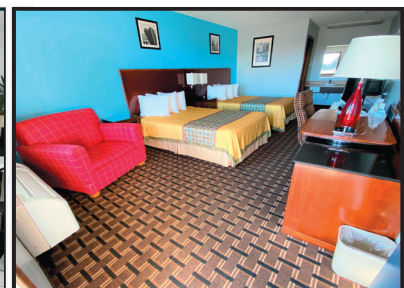
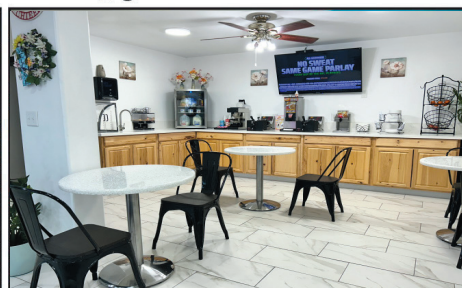
You don't have to leave your four-legged friends at home! We offer pet-friendly rooms!



@LakesInnMO

**BEST CHOICE FOR YOUR BUCK!**

Phone: 660-438-2882 • Fax: 660-438-4045  
LakesInnMO@gmail.com • LakesInnMO.com





# Our Events...

## April

12-13: Benton County Boutique Crawl  
25-28: Warsaw City Wide Garage Sales  
27: Benton County Wine Stroll

## May

3-4: Lincoln City Wide Garage Sales  
TBD: Warsaw Outdoor Fun & Adventure Show

## June

May 31-June 1: Cole Camp City Wide Garage Sales  
1: Benton County Art Fest in Warsaw  
6-8: Warsaw Jubilee Days

## July

4: Lincoln 4th of July Fireworks  
5: Drake Harbor Fireworks  
5-6: Smokin' Hot Harbor Fest  
6: Lincoln 4th of July Events

## August

30-31: Benton County Rodeo

## October

19-20: Warsaw Heritage Days  
19-20: Kaysinger Heritage Days  
31: Halloween Hoopla

## November

15-16: Benton County Boutique Crawl  
22: Lighting of Warsaw

## December

6-7: Kaysinger Christmas  
14: Hallmark Christmas in Warsaw





# Our Fishing ...

## *A Fisherman's Paradise*

A sprawling 55,600-acre reservoir, Truman Lake offers excellent fishing for bass, crappie, white bass, stripers, and other species, virtually year round. It is considered by many to be the best catfish lake in the state. Marinas and boat launch areas are available to the public, and many rent boats by the day. For those who enjoy fishing from the bank, there are over 950 miles of shoreline, and for those who prefer to fish from a canoe, kayak, or other fishing boat, there is plenty of easy access.



### PADDLEFISH

Paddlefish are a prehistoric fish that is represented by only two species worldwide. They don't bite a hook so you have to snag them. In the past they were commercially exploited for their eggs to produce freshwater caviar. Extracted paddlefish eggs may not be possessed while on waters of the state or adjacent banks, and may not be transported.

In Missouri the snagging season is March 15 - April 30. Always check the Missouri Fishing Regulations for the most current rules.

### CATFISH

Fish areas near swift current and deep water in large rivers. Heavy gear should be used because blues weighing 20 to 50 pounds are common in these waters.



# TRUMAN LAKE MARINE

**BUY ♦ SELL ♦ TRADE ♦ SERVICE**

**CUSTOM BOAT COVERS & UPHOLSTERY**

  
**LANDAU**  
**MERCURY**



**660-438-6358**



**5 miles N on 65**



**FOOD, DRINKS & FUN**

**(660) 438-RBAR**

**STEAK ★ BURGERS**

**SEAFOOD ★ PASTA**

**Home of the famous  
Bacon Bloody Mary**

**Local Beers on Tap**

**31390 WARSAW AVENUE**

**65 HWY - TAKE THE WHITE BRANCH EXIT**



# WARSAW: THEN & NOW

**1719:** Home to the Delaware, Shawnee, Kickapoo, Sac and Fox, but largely dominated by the Osage Indians. Pioneers begin to settle.

**1831:** Lewis Bledsoe builds the first ferry across the Osage River, enabling a boom in travel and freighting.

**1835:** Benton County is created and named for Thomas Hart Benton, Unites States Senator.

**1837:** The first Riverboats travel the Osage, stopping in Warsaw to deliver manufactured items needed by settlers, and picking up the raw goods harvested from the wilderness. Slaves load and unload the cargo to the beat of drums. The steamboat era doesn't last long, as they carried their own demise in the form of railroad building materials.

**1843:** The area is booming and the City of Warsaw is officially incorporated. While the story behind its name has been lost to history, it is believed that the town was named after Warsaw, Poland, in honor of Polish General Tadeusz Kosciuszko.

**1857:** The Mechanic's Bank of St. Louis is built and operated until 1861, when General Fremont's troops devastate the town. In 1903 it is remodeled into a jail and is still in use today.

**1858-1861:** The Butterfield Overland Mail Route made daily stops at what is now Resers Funeral Home.

**1861-1865:** The Civil War rages, Warsaw is demolished and burned.

**1874:** Warsaw reports a population of 500, 15 retail stores, two churches, two newspapers, and one each of hotel, school, bank, sawmill and flour mill.

**1880:** First train from Sedalia arrives in Warsaw.

**1886:** New courthouse building completed.

**1895:** Joe Dice builds the first suspension bridge in the area. Originally called the Drake Bridge, and then the Middle Bridge, the Joe Dice Swinging Bridge is one of four remaining bridges built by Joe Dice.

**1931:** Lake of the Ozarks is constructed.

**1945:** Harry S. Truman takes the oath of office two hours after the death of President Franklin D. Roosevelt. He was on Main Street, Warsaw, in what is now the Common Ground Café.

**1979:** Truman Dam is completed.

**1985:** Shawnee Bend Golf Course Installed

**1997:** First boat courtesy slips installed in Drake Harbor, along with the first section of the River Trails.

**1999:** Warsaw Municipal Airport-Hangars and Terminal built.

**2001:** Renovation of downtown Main Street

**2008:** Truman Lake Mountain Bike Park opened.

**2009:** Warsaw Riverfront Trails Phase II

**2010:** Work begins on Steamboat Landing in Drake Harbor.

**2017:** Shawnee Bend Bluff Trail opened.

**2018:** Warsaw receives two National Awards: Complete Streets Policies, and Trail Connectivity.

**2019:** Warsaw receives the "Innovation Award for Tourism"

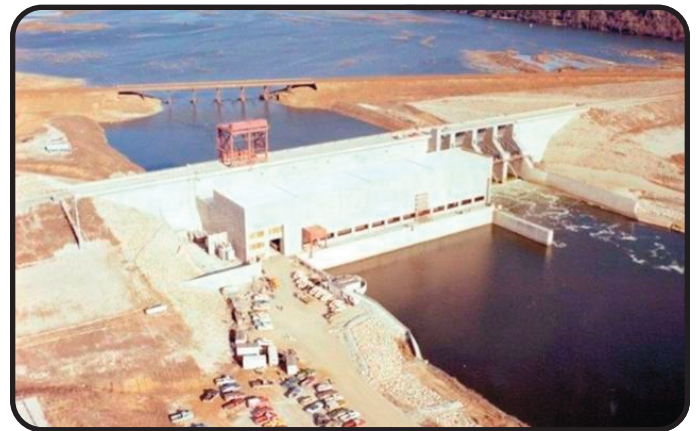
**2023:** Warsaw receives \$24,997,004 RAISE grant.



**Steamboat Landing, Drake Harbor:  
Then & Now**



**Joe Dice Swinging Bridge links  
Drake Harbor and the Riverfront Trails**



**Truman Dam near completion**

## Main Street through the years





# Our Tourism...

## Escape - Explore - Love Life More in Benton County, MO!

Benton County is Missouri's premier outdoor recreational playground offering something for every adventurous spirit.

Visitors to Benton County are welcomed in each quaint and charming town they visit. With a friendly "hello" or a big smile - you will feel like you're "home".

Benton County is refreshingly different than most destinations with BIG adventure with the hometown atmosphere whether you're out on one of the lakes, biking or hiking the miles of riverfront or mountain bike trails, exploring the conservation areas, beautiful parks or thousands of acres of public-use land surrounding Truman Lake, you won't be disappointed.

At the end of the day, be sure and follow your tastebuds to one of the family-owned restaurants but allow yourself enough time to stop in the dozens of flea markets, boutiques, locally-owned shops and more along the way.

Adding to your delightful visit, be sure to check out Benton County's calendar of events for the many unique festivals and events held throughout the year.

For more information on Benton County Tourism & Recreation, please go to [www.visitbentoncom.com](http://www.visitbentoncom.com) or check us out on Facebook.



**Restaurant, Bar & Marina**

**Lake of the Ozarks 76 1/2 MI**  
**29580 Waters Edge Road**  
**Lincoln, Missouri**

**660-668-2003**

- Marina with gas dock, covered boat slip rentals as well as courtesy docks
- Ice cream shop in lower level
- Serving breakfast starting in March

**Check us out on Facebook or online at [bucknakedbar.com](http://bucknakedbar.com)**

- Lakeside dining with a large covered dock overlooking the lake
- Great food and spirits
- Happy hour / Live entertainment
- Cabin rentals; spacious, 2-bedrooms with a loft above each, full kitchen, etc.)

**Cabins, Fuel, Food & Drink!**

**Truman STATE PARK Marina**

**660-438-2423**

Check out our NEW facebook page!  
 @Truman State Park Marina

**A full service family run marina providing all you need to enjoy Truman Lake!**

**SUNSETTERS BAR & GRILL**  
 Relax & Kick Back on our beautiful on-the-water deck!

**FREE PUBLIC BOAT RAMP • PONTOON & FISHING BOAT RENTALS • FUEL • BAIT • FISHING • FISHING PERMITS**  
**ICE & CONVENIENCE STORE ITEMS • SEASONAL & NIGHTLY SLIP RENTALS • FENCED STORAGE**  
**BEACHES & CAMPING CLOSE BY & LOTS of FUN for ALL!!!**

**14950 State Park Rd E • Warsaw, Missouri 65355**  
*Located 5 miles west of Warsaw. HWY 7 to HWY UU north. UU dead ends right into beautiful Truman State Park.*



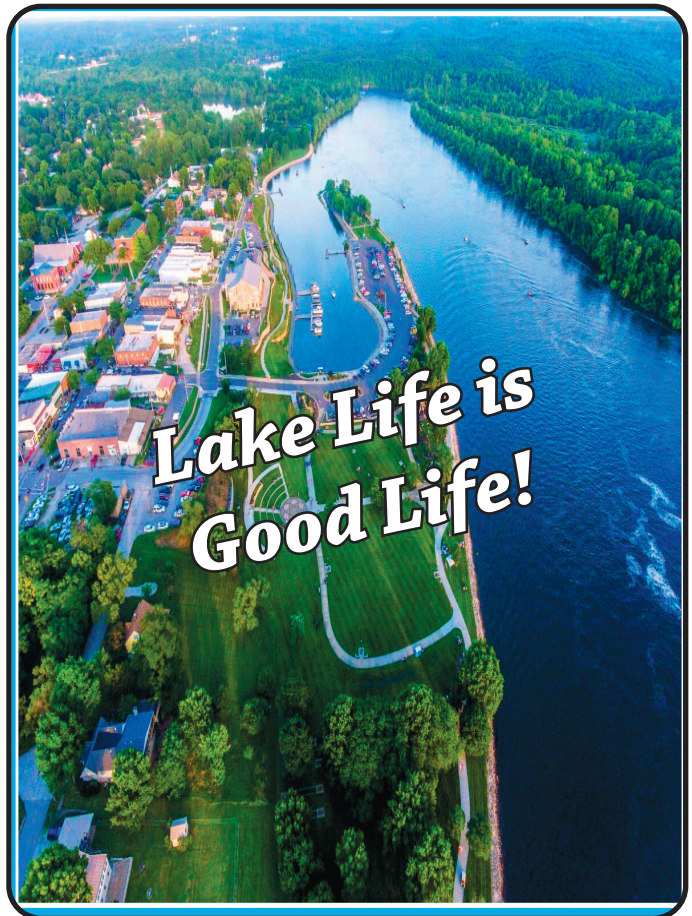
# Our Economic Development...



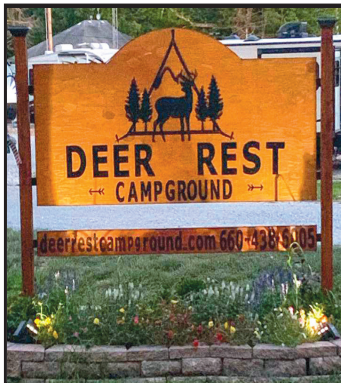
Benton County Economic Development's mission is to sustain and grow our economy and improve the quality of life for our citizens by providing resources for business creation, expansion, retention, and community development. We aid our communities in planning, economic & community development, and so much more! We strive to create an environment that encourages economic growth by supporting our county businesses and industries, strengthen our community, develop a talented and skilled workforce, and maintain a high quality of life. We connect our communities to opportunities because vibrant, thriving communities lead to better-lived lives for all of our citizens.

Let us help you grow your business. Whether you are a new business or existing, we have services to offer. We are a part of the START HERE Business Acceleration Network of resources for your business including the START HERE Revolving Loan Fund which helps small businesses get going and growing with micro-enterprise financing. The loan fund is part of the START HERE Business Acceleration Network's "Start Here – Grow Here – Stay Here" program.

The cities and communities in Benton County invite you to join our amazing business community. For the latest information please "Like" us on Facebook at Benton County Missouri Economic Development or visit [bcdevelopment.com](http://bcdevelopment.com).



(660) 438-6005



*Warsaw, Truman Lake and Western Lake of the Ozark areas. The Campground is semi-wooded, shady, rolling with level sites; lakeside available. From Junction of US 65 & Hwy 7 (North of town), South 1/2 mile on US 65 to Warsaw exit (East Main), West 1/3 mile to cemetery, South 1/10 mile.*

807 Gasoline Alley • Warsaw, MO

80 Sites, 60 Full Hookups, 20 Water & Electric, 8 Primitive, 11 Pull-Thrus, 1 Bathhouse with handicap facilities, 30/50 Amp Sites

By Lake of the Ozarks & Truman Lake!  
YOUR GET-A-WAY STARTS HERE



AXE THROWING &



**Monday-Thursday: 11:00 AM - 9:00 PM**

**Friday-Saturday: 11:00 AM - 10:00 PM**

**Sunday: 11:00 AM - 8:00 PM**

**Come and hang out for a great time. Featuring touch tunes for music and ice cream factory pints to add to a great time!**

**(660) 723-4232**

**909 East Main,  
Warsaw, MO**





# Our Schools...



The Warsaw R-IX School District is located in the beautiful Truman Lake/Lake of the Ozarks area. We have approximately 1400 students in Grades K-12 with a support staff of over 200 located in five buildings across five campuses. The Warsaw R-IX School District is Fully Accredited by the Missouri Department of Elementary and Secondary Education.

Warsaw High School  
 20363 Lane of Champions  
 P.O. Box 248  
 Warsaw, MO 65355  
 Phone: 660-438-7351

North Elementary School  
 134 W. Kosciusko Street  
 P.O. Box 307  
 Warsaw, MO 65355  
 Phone: 660-438-6260

South Elementary School  
 23395 Hwy. 7  
 Edwards, MO 65326  
 660-438-5965

John Boise Middle School  
 20363 Lane of Champions  
 P.O. Box 248  
 Warsaw, MO 65355  
 Phone: 660-438-9079  
 Additional information at:  
[www.warsawk12.org](http://www.warsawk12.org)



## State Fair Community College

*It's about community!*

Classes available in  
Boonville, Eldon, Lake of the Ozarks,  
Sedalia, Warsaw and  
Whiteman Air Force Base.

[www.sfccmo.edu](http://www.sfccmo.edu)

SFCC is accredited by the Higher Learning Commission (hlcommission.org), an institutional accreditation agency recognized by the U.S. Department of Education. All campus locations are smoke- and tobacco-free. SFCC is an equal opportunity employer.





# By The Numbers

## EDUCATION

High School Graduates: 42.85%  
Some College: 33.24%  
Bachelor's Degree: 10.75%  
Associates Degree: 9.54%  
9th-12th Grade: 7.33%  
Less than 9th Grade: 5.41%  
Graduate Degree: 2.99%

## VETERANS BY WAR

Vietnam: 59.05%  
Korean War: 13.33%  
First Gulf War: 12.38%  
Second Gulf War: 10.48%  
World War II: 4.13%



## CLIMATE

Average High Temp: 66  
Average Low Temp: 44  
Average Rainfall: 43.05"  
Average Snowfall: 3.0"  
Warsaw hold the Missouri  
record for both high and low  
temperatures:  
Record High: 118 (1954)  
Record Low: -40 (1905)



## EMPLOYMENT

Employment Rate: 47.2%  
Unemployment Rate: 1.5%  
Average Household Income:  
\$49,963



## GROWTH RATE

2.31%  
Growth since 2020: 9.49%

Beth's

# OSAGE MINI-MART

915 E. Main St.

Warsaw, MO

660-438-9575



## Boonslick Regional Library

Boonslick Regional Library strives to provide reading enjoyment for all ages. Materials are available in a variety of formats including regular print, large print, paperbacks, magazines, newspapers, books on CDs, and DVDs.

Patrons are encouraged to participate in programs held throughout the year. Preschool story hours, a winter adult reading club, children and teen summer reading clubs and after school programs are just a few.

The Warsaw Library has 13 adult computers, four children's computers, two card catalogs, two Early Literacy computers, and free Wi-Fi for public use. There is a self-check station for convenience.

Offered on our website are downloadable e-books, audio book, magazines, and graphic novels. Our online resources include links for antiques, genealogy, education, practice exams, computer help, and much more. Local newspapers on microfilm dating from the late 1800's may be viewed with a microfilm reader.

The community meeting room is available for non-profit and civic organizations by reservation. The Friends of the Library group continues to support the library throughout the year by offering book sales and programs.

The library is located at 102 E. Jackson Street and is open Monday through Saturday from 9:00 AM to 5:30 PM. For more information, call the library at (660) 438-5211 or visit [www.boonslickregionallibrary.com](http://www.boonslickregionallibrary.com)



Experienced • Knowledgeable • Confidential

## TRACEY SPRY & ASSOCIATES

certified public accountants, pc

### Tax Planning & Preparation

Individuals • Partnerships • LLC's  
Corporations • Farms • Businesses  
Accounting • Payroll • Open All Year

**FREE ELECTRONIC FILING**  
*when we prepare your tax returns!*



The CPA. Never Underestimate The Value.®

304 West Main • Warsaw, Mo. 65355

Ph: 660-438-7992

[www.tsprycpa.com](http://www.tsprycpa.com) • [tracey@tsprycpa.com](mailto:tracey@tsprycpa.com)



## REEL & TRIGGER RESORT

HOUSEKEEPING CABINS

Reel and Trigger Resort offers 13 cabins and a large lodge for gatherings. There is one full hookup RV site. We have Wifi/TV, and all the amenities you need to have a great time on your next lake getaway!

29720 Hwy UU, Warsaw, Mo. 65355  
(660) 438-2580



[REELANDTRIGGER.COM](http://REELANDTRIGGER.COM)





Offering hot deli-style sandwiches, garden fresh salads, homemade soup and chili, and delicious fresh-baked desserts.

145 W. Main Street, Warsaw, MO 65355

[yellowdeli.com/warsaw](http://yellowdeli.com/warsaw)

**(660) 438-2581**

Closed for the Sabbath on Saturdays

Located Next Door:

Common Sense Market

Wholesome Foods



## Worship Guide

Broken Vessels Ministries  
18708 Braden Rd.  
Warsaw, Mo. 65355  
(207) 266-2933

Warsaw Assembly of God  
703 Elm Street  
Warsaw, Mo. 65355  
(660) 438-6244

Faith Lutheran Church  
1201 Dogwood  
Warsaw, Mo. 65355  
(660) 438-6948

Warsaw Bible Church  
16155 Waggoner Rd.  
Warsaw, Mo. 65355  
(660) 438-9539

First United Methodist Church  
154 West Washington  
Warsaw, Mo. 65355  
(660) 438-6261

Warsaw Christian Church  
320 State Street  
Warsaw, Mo. 65355  
(660) 438-5312

St. Ann's Catholic Church  
30455 West Dam Access  
Warsaw, Mo. 65355  
(660) 438-3844

First Baptist Church  
305 West Jefferson  
Warsaw, Mo. 65355  
(660) 438-6161

**BIRDMAN APPAREL**  
T-Shirts, Banners, Signs, So Much More!  
T-SHIRTS THAT SOAR Offering Free Delivery To Clinton!

Call Us: (660) 723-0550  
[birdmanapparel@hotmail.com](mailto:birdmanapparel@hotmail.com)  
Visit [birdmanapparel.com](http://birdmanapparel.com)

107 East Main Street  
Warsaw, MO 65355  
Monday-Friday 9:00 AM - 3:00 PM



Gourmet adult cupcakes  
with premium spirits baked  
right into the mix

(non-alcoholic also available)

Call to order today  
315-383-0597  
[www.cupcakesgonewild.com](http://www.cupcakesgonewild.com)

(Delivery Available)



**JANOME**  
AUTHORIZED DEALER

# CITY'S EDGE

## Quilt Shop & Sewing Center

On-line Shopping at [www.citysedgestudio.com](http://www.citysedgestudio.com)  
In store and Curbside Pick-up available.

*Start them off right!*  
Get the best tools for the best experience!

Give the perfect gift of creativity with a new Janome. We carry sewing machines for beginners thru advanced sewers.



- FREE Start up classes and more with every machine purchase
- Edge to Edge Quilting Services - Quick Turnaround
- Quality Fabrics, Patterns, & Notions

Hours Tuesday - Fri 10a-5p, Sat 9-3p  
616 W. MAIN STREET, PO BOX 38  
WARSAW, MO 65355  
660-438-3177  
Visit us on-line at [www.citysedgestudio.com](http://www.citysedgestudio.com)

## Our Shopping...

While shopping in Warsaw, there is not much you can't find. Home decor, children and adult clothing, unique personalized gifts, fishing and hunting supplies, antiques, and more all located in our collection of small town shops. In addition to the wide variety of shopping, Warsaw offers two unique shopping experiences. The Benton County Boutique Crawl which includes 13 boutiques, in Warsaw, Lincoln, and Cole Camp is November 10th and 11th. This is an amazing event

to enjoy with your girlfriends and win up to \$1500 in prizes! The second event is hosted in conjunction with the Warsaw Christmas Festival and will be held December 9th. The Downtown Holiday Market, is the perfect kick off to your holiday shopping. Enjoy the Hallmark Christmas feel, as you make your way through the downtown shops, and find the perfect gifts. While you're there be sure to bring the family and enjoy making memories at our Christmas festival!



# Evenings Only

FORMAL WEAR BOUTIQUE

(660) 281-2312

Visit us online or instore!

250 W MAIN ST. WARSAW MO

# COUNTRY CHARM

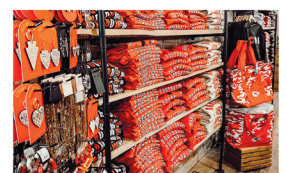
@stylebycountrycharm



**f** COUNTRY CHARM **ig** @STYLEBYCOUNTRYCHARM

JOIN OUR INSIDERS GROUP ON FB FOR SPECIALS AND SALES!  
[WWW.STYLEBYCOUNTRYCHARM.COM](http://WWW.STYLEBYCOUNTRYCHARM.COM)

*xo jennifer*





# Our Parks & Trails



## Truman Lake Mountain Bike & Hiking Park

Off-Road Trails  
Shelter House  
Picnic Tables

## M.K White Park

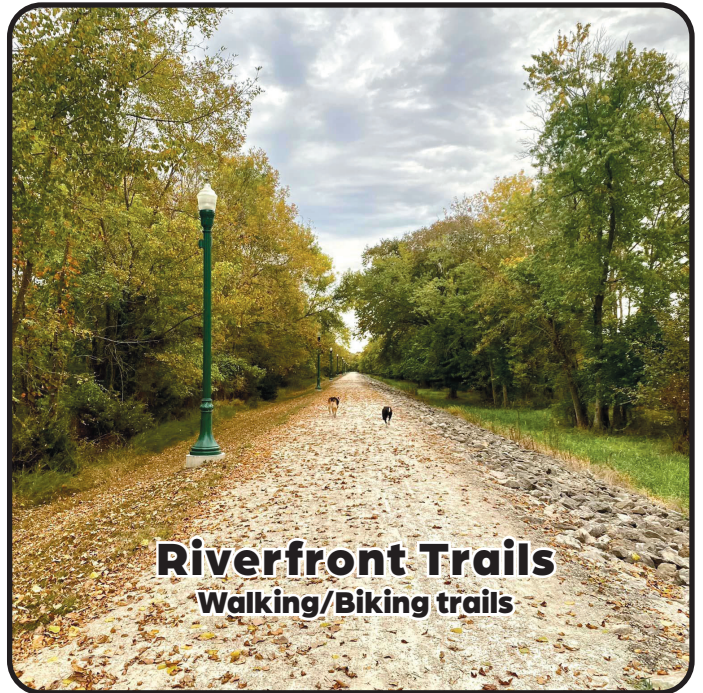
Disc Golf  
Pickle Ball Courts  
Fishing  
Riverfront Trail Access

## Shawnee Bend Park

Off-Road Trails  
Shelter Houses  
Swim Beach  
Disc Golf  
Shawnee Bend Golf Course  
Boat Ramp  
Playground

## West Bledsoe Ferry Sports Complex

Baseball Fields  
Softball Fields  
Playground  
Riverfront Trail Access





# Our Good Eats...

**Back in Time**  
234 W. Main  
Warsaw, Mo. 65355  
573-619-5557

**El Camino Real**  
120 West Polk St.  
Warsaw, Mo. 65355  
660-438-9994

**Nix Horseshoe Bar**  
312 Benton St.  
Warsaw, Mo. 65355  
660-723-9016

**Taco Villa**  
1695 Hilltop  
Warsaw, Mo. 65355  
660-438-6027

**Bucknaked Bar & Grill**  
29580 Water's Edge Dr.  
Lincoln, Mo. 65338  
660-668-2003

**Long Shoal Restaurant**  
12737 Steamboat Rd  
Warsaw, Mo. 65355  
660-438-2841

**R&R BBQ**  
10966 Hwy 7  
Clinton, Mo. 64735  
816-223-3762

**The Fix Coffee**  
1700 Commercial  
Warsaw, Mo. 65355  
660-317-8051

**Cosmic Cafe**  
504 West Main  
Warsaw, Mo. 65355  
660-438-6171

**McDonalds**  
1890 Commercial St.  
Warsaw, Mo. 65355  
660-827-0285

**Redwing Coffee**  
936 E. Main  
Warsaw, Mo. 65355  
660-438-9424

**The Landing**  
305 West Main  
Warsaw, Mo. 65355  
660-438-4150

**Dam Restaurant**  
801 Kennedy Dr.  
Warsaw, Mo. 65355  
660-438-3060

**My Secret Garden**  
420 Commercial St.  
Warsaw, Mo. 65355  
660-438-5731

**Sonic Drive In**  
2003 Commercial  
Warsaw, Mo. 65355  
660-438-6200

**The Rusty Skillet**  
248 West Main  
Warsaw, Mo. 65355  
660-438-7660

**Drake Harbor Trading**  
221 Main St.  
Warsaw, Mo. 65355  
816-213-6626

**Nee Nee's Italian**  
324 West Main  
Warsaw, Mo. 65355  
660-438-4421

**Subway**  
1886 Commercial  
Warsaw, Mo. 65355  
660-438-4324

**The Yellow Deli**  
145 West Main  
Warsaw, Mo. 65355  
660-438-2581



**DRIVE THRU!**  
**FULL BREAKFAST MENU!**  
**AND AS ALWAYS...**  
**SPECIALTY COFFEE!**

**COSMIC CAFE**  
BREAKFAST LUNCH & COFFEE

Monday-Saturday 7am 3pm  
Breakfast 7-11 • Lunch 11-2 daily  
504 West Main St., Warsaw

**660-438-6171**



**DRAKE HARBOR TRADING CO.**  
221 West Main Street Warsaw, Missouri  
**816-213-6626**

Wine / Adult Beverages  
Gourmet Pickles / Olives & Snacks  
Clothing / Home Decor  
Back deck overlooking Drake Harbor

OPEN  
FRIDAY - SATURDAY  
12PM - 8PM

CLOSED  
SUNDAY - THURSDAY

Find us on:  
**facebook**





# BEYONDER MARINA

STERETT CREEK, MO

Book for  
as low as  
**\$32.00**  
/ night



## CAMP, BOAT, FISH & RELAX THE DAY AWAY



Nightly & Seasonal Slips | RV Sites | Motel Rooms

The Retreat (2 Beds) | Guest House (4 Beds) | Boat Rentals | Bar & Grill

[www.beyondercamp.com](http://www.beyondercamp.com)

(660) 438-2821



## More Bikes & Hikes...

- Truman Lake Mountain Bike Park
- Shawnee Bend Bluff Trail

Bring your bike to Warsaw! There are many trails and gravel roads to explore. If you are looking for flat, paved trails, check out Drake Harbor and the Bledsoe Ferry Trail. Both are part of the Riverfront Trail System in downtown Warsaw and are also lit for nighttime enjoyment. The Riverfront Trail System also includes The Kickapoo Island Trail and the Osage Trail, which meander along both sides of the Osage Arm of Lake of the Ozarks. The trails are connected by the Joe Dice Swinging Bridge. The Riverfront Trail system utilizes beautiful Drake Harbor as the hub, and all the trails are rideable on a road bike. For mountain bike enthusiasts, the Truman Lake Mountain Bike Park and Shawnee Bend Bluff Trail offer miles of off-road adventure, plus great

views of Truman Lake. These are hand-cut trails through the woods, and a mountain bike is recommended. If back country gravel roads call to you, bring your gravel or cross bike and explore the Butterfield Stage Experience. Adventure awaits in Warsaw!



**DRAKE LAND TITLE**  
COMPANY

167 W. Main  
P.O. Box 998  
Warsaw, MO 65355  
info@draketitle.com  
660-438-5188  
660-438-6644

## The Lazy RS Lakehouse



BOOK



NOW!!



Located in a private, quiet subdivision, this 4-bedroom, 3-bath house with access to the Lake of the Ozarks. Relax in the family rooms, swim in the quiet cove, enjoy lake life!. Close to Drake Harbor and Downtown Warsaw.



## City of Warsaw Municipal Airport

Located at 19321 Airport Lane, Warsaw, MO. The airport is owned by the City of Warsaw, and located 5 miles north of Warsaw on 65 Highway.

It consists of a 3300-foot concrete runway and includes a tarmac tie-down area and AWOS – Automated Weather Observation System. Amenities include: AvGas with 24 hr. credit card self-service; a terminal building with restrooms; courtesy car available on request; credit card security at no charge; a pilot's lounge with internet access, and available snacks and refreshments. If you are needing to lease a hangar please call 660-438-5522 and speak to Jessica Kendall to have your name added to our waiting list.



**COMMERCIAL / RESIDENTIAL  
LICENSED AND INSURED**

**CALL THE BEST!  
FORGET THE  
REST!**

## SUNDOWN MOTOR LODGE

Gateway to the Lakes!  
[sundownmotorlodge.com](http://sundownmotorlodge.com)



660-547-3020  
23339 Hwy 65  
Lincoln, MO 65338

  
*Mosley Law*

(660) 530-0103

JEREMIAHMOSLEY.COM



**HOURS:**  
**M-TH 5-10pm**  
**FRI 5pm-12am**  
**SAT 12am-12pm**

**FOOD. GAMES.**  
**BOWLING.**  
**It's kinda our thing.**

**(660) 547-2695**  
**23929 Highway 65**

# ★ BENTON RIDGE WINERY ★

**POOL - DARTS - LIVE  
MUSIC**  
**INDOOR/OUTDOOR  
SEATING - CAMPING**

**25518 FITZPATRICK AVE**  
**WARSAW, MISSOURI**  
**(BB HWY)**

**(660) 776-9463**

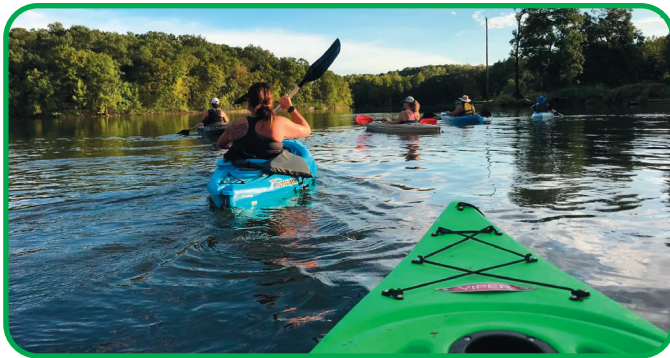


## Explore The Shores

More than 60 public access points to over 2,000 miles of shoreline and 180 square miles of water, makes Warsaw, Missouri the premier center axis for paddle sports in the region. Kayak anglers travel hundreds of miles to fish the world class trophy waters of both Truman Reservoir and Lake of the Ozarks. Families and recreational paddlers launch from Warsaw seeking the remote quiet coves and large open water of both lakes. Birdwatchers explore the rich wetlands, while adventure paddlers looking for extraordinary river systems will find Pomme de Terre, Niangua,

and little Niangua rivers just a short trip south.

The vast open water of Truman Reservoir or the main channel of Lake of the Ozarks, especially on busy weekends, do have special challenges. Not to worry though, Warsaw has you covered. Talk with the local experts at businesses like Warsaw Adventures who provide professional kayak and paddleboard sales or rentals, guided tours, and classes, or join one of the Truman Lake Adventure Club group events designed for new or proficient paddlers to experience all that the local waters have to offer.



**Wednesday: 11:00-7:00**  
**Friday-Saturday: 11:00-9:00**  
**Sunday: 11:00-7:00**

**NOW A NON-SMOKING ESTABLISHMENT!**



**CALL IN YOUR ORDER!**

**(660) 438-3060**

**801 Kennedy Dr Warsaw, MO 65355**





*Roasted in House*  
Come see us soon  
**936 B E. MAIN STREET  
WARSAW, MO 65355**

**DAYTIME DELIGHTS**  
*Breakfast & Lunch items*

**RISE AND SHINE WITH US**


Monday - Saturday  
6:30AM - 5PM  
Sunday  
8AM - 3PM

**GOOD VIBES  
AND  
GOOD COFFEE**

(660) 438-9424  
*Order Beans Online*  
**WWW.REDWINGCOFFEEMO.COM**




## TREATS GALORE!

**Western Lifestyle  
Boutique - Home Decor  
Gifts - Lawn & Garden  
Angus Beef**

**107 N. Hwy 65  
Lincoln, MO  
(660) 373-1300**



**Customizable  
coverage for  
different needs**

- Recreational
- Life
- Property & Liability

Smart choices last a lifetime.  
**Call me today! 660-438-8898**

**Shawn Poyser**  
Your Local Agent | License #3001465847  
1650 COMMERCIAL ST STE A  
WARSAW, MO 65355-  
spoyser@farmersagent.com

**FARMERS  
INSURANCE**

**Tightwad Tee's LLC**  
983 SE 450 Rd  
Clinton, MO 64735

Don & Mary  
660-525-0336  
660-351-2370

**SCREENPRINTING  
VINYL GRAPHICS  
BANNERS KOOZIES  
EMBROIDERY CAPS  
TSHIRTS  
AND MUCH MORE**



[www.tightwadtees.com](http://www.tightwadtees.com)



# Harry S. Truman Dam

*The Largest Flood Control*

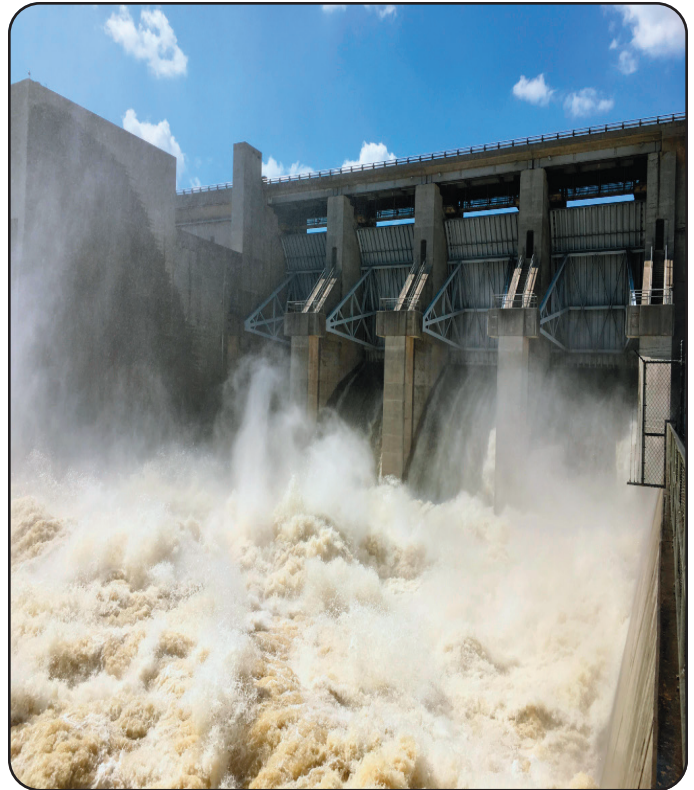
*Reservoir In The State*

The U.S. Army Corps of Engineers welcomes you to one of Missouri's most popular recreation lakes. Construction of the flood control dam and reservoir began in 1964 and was completed in 1979. The Harry S. Truman Dam, located on the Osage River about 1½ miles northwest of Warsaw, consists of an earth/rock embankment, concrete spillway and hydroelectric power plant.

An abundance of fish and wildlife can be found in and around Harry S. Truman Reservoir. Millions of fish are stocked in the lake by the Department of Conservation. Known for its crappie and bass, many tournaments are held each year on Truman Lake.

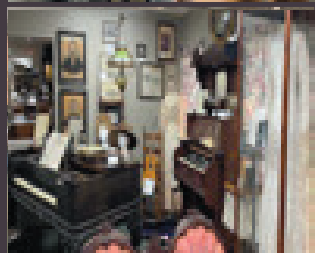
White-tailed deer, turkey, squirrel, rabbit, quail and waterfowl are also abundant residents and visitors around the lake. The lake provides habitat for bald eagles and pairs are often present during the summer months.

The Visitor's Center offers and provides a wonderful representation of the history of the dam and provides an excellent observation deck for viewing the area. The grounds have hiking trails and 1800's buildings to explore.



Truman Dam during the flood of 2019

# BENTON COUNTY MUSEUM



[www.bentoncountymissourimuseum.org](http://www.bentoncountymissourimuseum.org)

1660 Hilltop Drive, Warsaw, MO 65355

P.O. 1082 / 660-438-2304

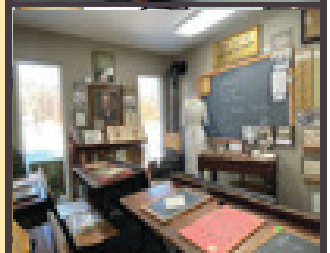


Open: April - October

Friday-Saturday: 10 AM - 4 PM Sunday: 1 PM - 4 PM

ADMISSION:

Members no charge; \$3 adult, \$2 senior,  
\$2 children 4-12, children under 4 free  
**GROUP TOURS BY APPOINTMENT**



**LUCAS OIL SPEEDWAY**

**LUCAS OIL**  
*Wheatland, Missouri*  
**Speedway**

**2024**

**SCHEDULE**

AVAILABLE AT:  
[LUCASOILSPEEDWAY.COM](http://LUCASOILSPEEDWAY.COM)

**KOVAC'S**

**FIREWORKS®**

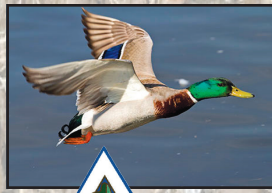
31487 Mo-83 Warsaw, Missouri 65355  
 660-438-7778 / 816-646-1172

**OPEN JUNE 20 - JULY 10TH**

**OPEN YEAR ROUND BY APPOINTMENT**  
**NOW MORE PARKING!**  
 visit us at [kovacfireworks.com](http://kovacfireworks.com)



# THE HUNT IS ON



The white-tailed deer is aptly named because the white undersurface of its flag-like tail is about all that we see in the fleeting glimpse we get as it bounds across fields and fences. Deer season has many variables in method, antler restrictions, and dates to hunt so check with the Department of Conservation for permits and information.

There is a spring and fall turkey season each year, with a weekend dedicated solely to youth hunters wanting to bag a bird. A Tom turkey's gobble can be heard over the hills for a mile, and the birds are hard to track when on the move as they can run up to 25 miles per hour. They are extremely wary creatures, and many hunters lure them in with calls. To hunt ducks at an intensively managed wetland conservation area, a draw system is used to limit the number of hunters on a given day. There are also many open hunting areas where only a permit is required during waterfowl season. Check with the Missouri Department of Conservation for more information.

**The Laundry Room**  
**Heavy-duty washers & dryers**  
**108 E. Jackson-Warsaw**  
**660.221.7644**



## Fish's Mobile Detailing

**Auto • Motorcycle • Boat • RV • Farm Equipment**

We are a fully equipped mobile detailing service. All details are done on site at your home or office while you continue your day.

**315-289-5754**

*Serving Warsaw & Surrounding Areas*

[www.fishsmobiledetailingmo.com](http://www.fishsmobiledetailingmo.com)



## Fish's Cleaning Service

**Residential & Commercial**  
**Weekly • BiWeekly • Monthly**  
**Vacation Homes & Air BnB's**  
**Move In - Move Out**

**315-383-0597**

[www.fishscleaning.com](http://www.fishscleaning.com)



# Allen Pump Service

660-438-7693 - BRAD  
660-723-2455 - ROSS

LET'S GIVE EVERYONE THE WATER SYSTEM THEY NEED TO DO THE THINGS THEY WANT.

**Aermotor STA-RITE®**

GRUNDFOS  
FAIRBANKS MORSE ENGINE  
PENTECH  
Sentry  
GOLD PUMPS  
HITACHI  
ABB  
EMERSON  
RED JACKET Water Products  
Danfoss

## ST. ANN CATHOLIC CHURCH

30455 West Dam Access Rd. Warsaw, MO 65355

Fr. Ben Nwosu, Pastor

(660)438-3844 / stannwarsaw1@gmail.com

Office Hours: Tuesday-Friday 9:00am - 4:00pm

**MASS TIMES:**

SATURDAY - 6:30 PM / SUNDAY - 8:30 AM

Tues, Thurs & Fri - 8:30 AM

Confession Times / Cole Camp &  
Hermitage Mass times - see website

[www.stannwarsawmo.org](http://www.stannwarsawmo.org)

SCAN HERE!



# JOHNSON



## AUCTION SERVICE

Now Celebrating 80 Years of  
continuous service to Benton,  
Pettis & surrounding counties

Russell "Rusty" Johnson    Phillip Yoder  
(660) 221-4067                (660) 723-3389

For Full Listings, Pictures and Details  
[www.auctionzip.com](http://www.auctionzip.com) (ID#20300)

Farm • Antiques • Real Estate • Household • Livestock • General  
"Third Generation Family Tradition Since 1942"



BOOK NOW!

Options  
to make  
any event  
memorable!

217 W. Main St., Warsaw, MO 65355

Call at 660-428-2480

[maineventweddingboutique.com](http://maineventweddingboutique.com)



## JASON'S AUTOMOTIVE

Jason Judd Owner

We Are The  
"Can Do"  
Professionals

Hours

Monday-Friday  
8:00 AM to 5 PM

660 438-2002

805 Wood St.  
Warsaw, MO







**Co-Mo CONNECT**  
*Powered by Co-Mo Electric Cooperative*

# Ultra-Fast Internet That **Makes Life FUN!**

Watch the adventures of Chip Thunder and Snuggles on the Co-Mo Connect YouTube channel!



[www.CoMoConnect.com](http://www.CoMoConnect.com)

| 844-99-FIBER



**Grill & Chill**

Valid At: 1811 S Limit Ave, Sedalia, MO 65301 & 103 Progress Dr, Warsaw, MO 65355 Expires 12/31/24

**I AM THE CAKE FOR ANY PARTY AT THE LAKE!**



**BUY ONE, GET ONE for \$1.99**



**SIGNATURE STACKBURGER**

Limit one per coupon and one coupon per customer. This coupon not redeemable with any other offer and redeemable only on items selling at regular price. This coupon has no cash value. Coupon must be presented at time of purchase. All trademarks owned or licensed by Am. D.Q. Corp. © 2022.

**GRAND RIVER RESORT**

**11919 Highway 7  
Warsaw, MO**

**(660) 438-2743**

**grandriverresort.net**



**Plumbing & Electrical**

**More Bang For Your Buck  
with Bob**



**Best Price in Town  
Guaranteed!**



**660-287-7167**



MEMBER NATIONAL SOCIETY OF PUBLIC ACCOUNTANTS

# Johnson's

## ACCOUNTING & TAX SERVICE, LLC.

ENROLLED TO PRACTICE BEFORE INTERNAL REVENUE SERVICE

All Tax Types Filing Available • No Business Too Big Or Too Small!  
Free Electronic Filing • Over 50 Years Experience



201 S. Hwy 65, Lincoln, MO

660-547-3332

[sjtax05@embarqmail.com](mailto:sjtax05@embarqmail.com)



**Contact Us:**

(660) 547-3535

PO Box 193  
546 N Hwy 65  
Lincoln, MO 65338

[www.lincolnmorealty.com](http://www.lincolnmorealty.com)

**- REED 'EM  
& WEAVE -**



Basket making supplies/workshops.  
Flat reed, flat oval, round reeds/smoked  
reeds. Handles, hoops, basketry.

[www.reedemnweave.com](http://www.reedemnweave.com)

805-305-5993



# ReeceNichols

GOLDEN KEY REALTY  
An Independently Owned and Operated Member of the Reece & Nichols Alliance, Inc.  
Located on Highway 65 just North of Warsaw

**800-760-2255/660-438-7228**



**Luke Beaman**  
660-723-0563



**Fred Beaman**  
660-438-7228



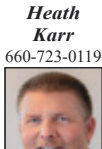
**Julia Lockney**  
660-438-0685



**John Eierman**  
660-723-0988



**Kennie VanHoltan**  
660-229-2968



**Heath Karr**  
660-723-0119



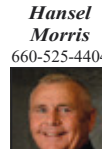
**Debbie Wood**  
660-221-5710



**Crist Fanning**  
866-438-7070



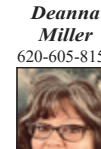
**Brandon Martin**  
660-221-7939



**Hansel Morris**  
660-525-4404



**Crystal Self**  
660-620-9217



**Deanna Miller**  
620-605-8151



**Katie Martin-Simons**  
816-728-5744



**SEE MORE! Visit [www.warsaw.reecenichols.com](http://www.warsaw.reecenichols.com)**



***Doing everything we can to provide you a remarkable home buying and selling experience!***



## Shawnee Bend Golf Course

With scenic views and a challenging layout, Shawnee Bend Golf Course has been a staple of recreation in the Warsaw community since it opened in 1985. Located minutes from historic downtown Warsaw and only 30 minutes from Sedalia and Clinton, it offers small town prices while maintaining big city golf value.

From Beginner to Pro, we are the place to go. Please feel free to call the Clubhouse with any questions at 660-438-6115. Be sure to ask about our hours, memberships, and all the benefits of joining one of the most challenging nine hole courses in the state.

In recent years, the staff at SBGC has teamed with the US Army Corps of Engineers to clear brush in certain areas in order to provide a new, scenic backdrop to the beautiful course. A round at Shawnee Bend now offers breathtaking views of Truman Lake, including a panoramic view stretching for miles and a scenic view of the iconic "Mile Long Bridge."

To realize the true beauty of Shawnee Bend, stop by and play today!



**MK Mansell Properties LLC**

**Owner Kathy Mansell**

Let me help you  
find your new home  
at the lake!

**Phone: (805) 305-5593**

**mkmansellprop@gmail.com**

**Broker# 2023050034**

Full Service Property Management  
Regular Property Inspections  
Complete Tenant Background Checks  
Eviction Services  
Professional Maintenance Services  
Whether you're buying or selling MK Mansell Properties can help you with your real estate needs.

## At The Lake Quilt Shop

Great Price Fabric, Notions, Fat Quarters  
& Make Your Own Jellyrolls!  
Machine Quilting & Alterations Available

Lori VanNatta / [atthelakequiltshop@gmail.com](mailto:atthelakequiltshop@gmail.com)

Hours: Tues - Fri 9am-5pm • Sat 9am-2pm  
31958 83 Hwy South Warsaw MO 65355

**660-223-2175**

**Katy Trail**  
Community Health

Harbor Village 17571 N. Dam Access Rd.  
877-733-5824

**Warsaw Senior Center**

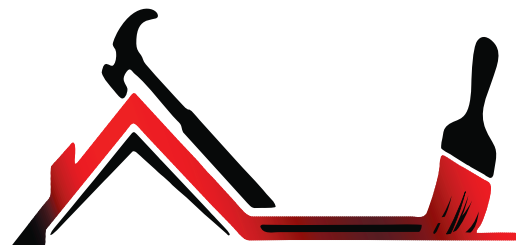
660-438-3300

Meals • Recreation • Information



A medical hub for  
Benton County  
Residents.

**Care Connection** 50 YEARS  
for Aging Services  
1973 - 2023



**ROLLING PERFECTION**

**RESIDENTIAL AND COMMERCIAL**

**INTERIOR / EXTERIOR PAINTING**

**ROOFING, SIDING, AND SO MUCH MORE!**

**LICENSED AND INSURED**

**660-924-6069 / 417-288-9435**

**OWNERS MIKE AND SHAWNA BARKER**



**AUTOMOTIVE**

LINCOLN, MO

[premierautomotivelincoln.com](http://premierautomotivelincoln.com)

206 N. Hwy 65  
Lincoln, Mo 65338

**QUALITY USED CARS**

**SPECIALTY GOLF CARTS**

***Vehicles for the whole family!***

**Financing Available**

**Trade-Ins Welcome!**



**SHOP PREMIER AUTO  
FOR THE WIN!**

**660-776-2019**

**SERVING MID-MISSOURI FOR 30 YEARS**



# Pitts

Over 40 Years Since 1971

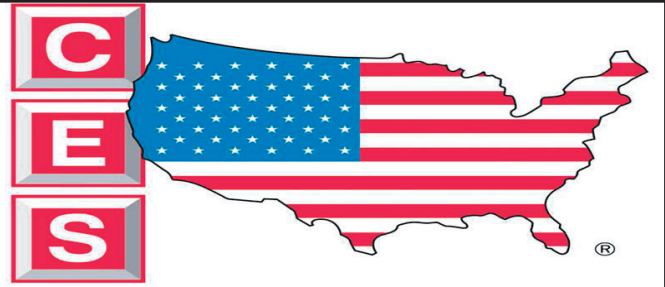
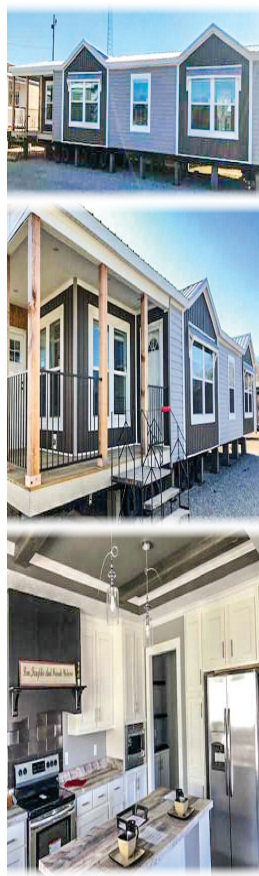
## HOMES, INC.

*"For A Home That Fits,  
Choose Pitts"*

29101 Old Hwy. 65,  
Dam Access Road, Warsaw, Mo

**660-438-2505**

[www.pittshomesinc.com](http://www.pittshomesinc.com)



### CITY ELECTRIC SUPPLY

City Electric Supply is a family-owned electrical wholesale business dedicated to providing the best service and support for customers in the residential, commercial, and industrial markets since 1983.

Offering tools, parts, batteries, cable, lighting and  
**MUCH more!**

**(660) 900-3512**

2080 Commercial St Warsaw, MO  
65355



Hours:  
Monday - Friday 7am-5pm  
Saturday 8-11am

Visit us online to learn more!

[www.cityelectricsupply.com](http://www.cityelectricsupply.com)



## **JIM FALK MOTORS** Inc.

CLINTON, MO



# LOWEST PRICE ON TIRES!

# JUST \$ OVER COST

Call, Click, Schedule:

[jimfalk.com](http://jimfalk.com)

Sales & Service: (660) 956.0076



**FULLY SYNTHETIC  
OIL CHANGE JUST \$49.95!**

# *Mills & Sons* INSURANCE

— SINCE 1869 —

*Auto • Home • Business • Life • Employee Benefits*



Because Life Happens.



*(660) 438-7379*

*101 East Main St.*

*Warsaw, MO 65355*



# Ozark Chimney & Fireplace



**422 Commercial Street  
Warsaw, MO 65355**

**660-438-7734**

**ozarkchimneyandfireplace.com**



**LET US HELP YOU WITH ALL YOUR LAND,  
FARM & HOME SELLING & BUYING NEEDS!**

**CALL US TODAY!**

**660-668-4868**



14484 Centerline Ave. Cole Camp, Mo. 65325

[www.MissouriLandCo.com](http://www.MissouriLandCo.com)

*In Business Since 2013*

# ZOLICKER GAS-OIL-PROPANE Wholesale & Retail

937 Main Street      221 West Clinton  
Warsaw, MO 65355      Clinton, MO 64735  
(660) 438-5331      (660) 885-6125

**We pitch the QUALITY... You catch the SAVINGS**

# BACK IN ACTION

**Chiropractic LLC**

***Sports Rehab & Acupuncture***

**(660) 620-0276**

1650 Commercial St, Suite B  
Warsaw, MO 65355

1501 S Grand Ave,  
Sedalia, MO 65301

[backinactionchiropracticllc@gmail.com](mailto:backinactionchiropracticllc@gmail.com)

**Cody's**

# CONCRETE FLATWORK

**Garages • Driveways**

**Patios • Curbs**

**Basements**

**Tear Out & Replace**

**660-723-4419**

### Moving to Warsaw?

Need help setting up your home or business? These local businesses can assist with all your needs!

#### License Bureau

237 Main Street  
Warsaw, Mo. 65355  
(660) 438-0025

#### Plumbing/Electric Service

Advantage 1 Electric  
(660) 723-0327

D & M Plumbing  
(660) 747-7808

H&C Plumbing/Electrical  
(660) 596-1467

Sawyers Plumbing & Electric  
(660) 221-0360

#### Gas & Propane

Pinnacle Propane  
(660) 438-6118

801 East Main St.  
Warsaw, Mo. 65355

Zollicker Gas, Oil, & Diesel  
(660) 435-5331

937 East Main St.  
Warsaw, Mo. 65355

#### Pest Control

Jerry's Pest Management  
(660) 885-5378

Steve's Pest Control  
(573) 896-4868

#### Internet Services

Co-Mo Connect  
(844) 993-4237

#### Well and Septic Services

Allen Pump Service  
(660) 438-7693

Danny Roellig Backhoe Services  
(660) 438-3002

Dean L. Yoder & Sons Excavating  
(660) 723-1135

RNR Backhoe & Complete Septic  
(417) 998-9019

#### Storage Facilities

Basswood Boat Storage  
10607 Durk Rd.

Warsaw, Mo. 65355

(660) 438-8460

C&J Storage  
1221 Dogwood

Warsaw, Mo. 65355

(660) 438-6550

Hawk Pointe Storage  
32789 Hilty Ave.

Warsaw, Mo. 65355

(537) 424-6623

#### Trash Services

Dependable Dumpster  
(660) 223-3933

Ozark Disposal  
(660) 438-6467

#### Water

People Service  
(877) 774-4311

#### Interesting Warsaw Information

Population: 2,388

Median age: 48

Average Family Size: 3.22

Average High Temperature: 66

Average Low Temperature: 44

Average Rainfall: 43.05"

Average Snowfall: 3.0"

#### How many miles away from:

Clinton: 29

Sedalia: 35

Jefferson City: 83

Springfield: 85

Columbia: 103

Kansas City: 105

St. Louis: 225



**T-Shirts,  
Banners,  
Signs,  
So Much More!**

**T-SHIRTS THAT SOAR** Offering Free Delivery To Clinton!

**Call Us: (660) 723-0550**

**birdmanapparel@hotmail.com**

**Visit *birdmanapparel.com***

**107 East Main Street**

**Warsaw, MO 65355**

**Monday-Friday 9:00 AM - 3:00 PM**



**Dull & Heany  
Law Firm**

*Caring for over 35 years*



**660-438-7102**

**www.dullheanylaw.com**

# **ATTA-BOY GUTTERING METAL ROOFING**

**\* Seamless Guttering \* Free Estimates**

**• Siding • Soffit/Fascia**



**LIFETIME WARRANTY**

**660-723-5840**



# Equity Means More

**MORE  
Response**

**MORE  
Attention**

**MORE  
Expertise**

**Warsaw Downtown**

100 E Main  
(660) 438-4388



**EQUITY BANK**

**[equitybank.com](http://equitybank.com)**

Member FDIC

# Heritage Days

*A Celebration of Warsaw*  
 October 19-20, 2024

The third weekend in October brings the biggest event in Benton County to Drake Harbor and Kaysinger Bluff in Warsaw. Heritage Days is a two day event filled with handmade crafts, modern gifts, and a showcasing of hunting, fishing, and outdoor adventure products. Antiques, collectibles, and modern boutiques on Main Street also add to the shopping experience. A variety of food vendors set up in the harbor, and an array of delicious dining opportunities awaits on Main Street.

The Community Building hosts over 30 crafters and artists in its location overlooking Drake Harbor, where the main festival is held. Vendors set up in booths along the asphalt, in the lawn area by the amphitheater, and in

three giant tents. Heritage Days draws over 250 vendors in all, and is free for the public to attend.

For more information or to be a vendor at Heritage Days, please call the Warsaw Chamber of Commerce at 660-438-5922.



**STEVE'S**  
**GUTTERING**  
 660-438-6381  
 WWW.STEVESGUTTERING.COM

## YOUR SOURCE FOR BUILDING SUPPLIES



Check Out the Color Visualizer on our website under the Buildings tab!

**We carry a full line of Metal roofing, fasteners & trims. We also offer complete building packages. Give us a call or stop by today!**

**CALL FOR CURRENT METAL PRICING!**

Textured Metal  
 Lifetime Metal  
 40 Year Metal  
 Liner Panel

**Serving Central Missouri**

19894 McDaniel Rd  
 Warsaw, MO

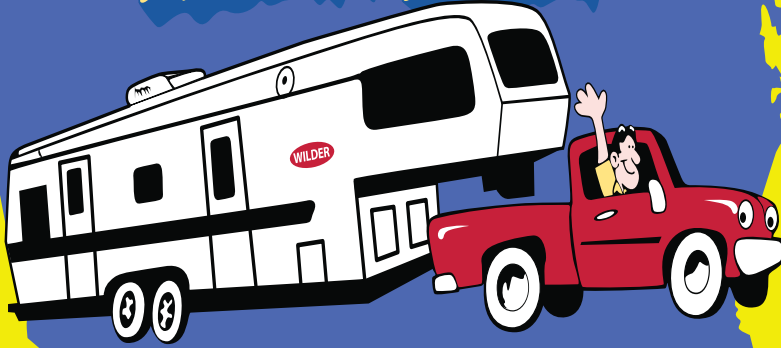
*"Your Project, Our Priority"*



**Metal Roofing, Lumber & Building Supplies**  
 660-547-0223 [www.goldenruleco.biz](http://www.goldenruleco.biz)



**Run Wild**  
*Across America*



**CLINTON, MO**  
**800-357-5790**

- ★ SALES
- ★ SERVICE
- ★ PARTS

**WILDER RV.com**



**SERVICE CALLS**  
**COMMERCIAL & RESIDENTIAL**  
**DRAIN CLEANING**

www.warsawplumber.com EMAIL: HandC.Plumbing@yahoo.com

**(660) 428-2371**

HEATH CUNNINGHAM, OWNER

**924 E MAIN STREET, WARSAW, MO**

**Porter Chiropractic  
Clinic, P.C.**



Established 1965

*The most up-to-date  
diagnostic & rehabilitation  
techniques combined with  
hands-on adjusting*

*2nd Generation Chiropractor*

**OTHER SERVICES OFFERED INCLUDE:**

Nutritional Counseling  
Exercise, Fitness  
& Wellness Counseling  
Sports Injury Rehabilitation  
Ultrasound Therapy

**Leo I. Porter, D.C.**

**660-438-5511**

122. W. Washington  
P.O. Box 532  
Warsaw, MO 65355

Mon, Tue, Wed & Fri  
9 AM to 5 PM  
Closed Thur & Sun

# Numbers to Know

## Emergency Services

Emergency...911  
Non-Emergency Dispatch...(660) 438-5555  
Sheriff...(660) 438-5252  
Ambulance Office...(660) 438-2993

## City Government

Warsaw City Offices...(660) 438-5522  
Benton County Courthouse...(660) 428-2900

## Schools

Warsaw R-IX Schools District Office...(660) 438-7120  
High School...(660) 438-7351  
John Boise Middle School...(660) 438-9079  
South School...(660) 438-5965  
North School...(660) 438-6260

## Community

Warsaw License Bureau...(660) 438-0025  
Warsaw Senior Center...(660) 438-3300  
Warsaw Municipal Pool...(660) 438-7350  
Benton County Economic Development...(660) 492-3902  
Benton County Tourism & Recreation...(660) 438-2090  
Benton County Museum...(660) 438-6707  
American Legion...(660) 438-6928  
Warsaw Shrine Club...(660) 438-9750

## Dependable Dumpsters

We offer 10, 12, and 15 yard roll-off dumpsters. These are great driveway dump-out, remodel, or construction project.

*The name says it all!*

**660-223-3933**



*Benton County and Surrounding Area  
Chuck Jennings - Owner*

**WHITAKER**  
BOBCAT & EXCAVATING LLC

**660.723.2313**

## HOPE 5 ONE

Offering Hope and Freedom from Human Trafficking

- Awareness programs
- Emergency Shelter & Survivor Support
- Future goal: Home of Restoration

HOPE  
5 ONE



Contact us at [hope5oneministry@gmail.com](mailto:hope5oneministry@gmail.com) to speak to your group or to see how you can get involved with us!



Follow us on social media @hope5one



NATIONAL HUMAN TRAFFICKING HOTLINE  
1-888-373-7888



SCAN THE CODE TO  
LEARN MORE ABOUT US!



Warsaw  
Bible  
Church

Learning and Living the Truth

**16155 Waggoner Road,  
Warsaw, MO 65355**

**Wednesday Service @ 6:30 pm**

**Sunday Service @ 8:00 am**

**Sunday Service @ 10:00 am**

**warsawbiblechurch.org**

**FOLLOW US ON FACEBOOK!**



# There's No Place Like Home.

...and there's no better place than Warsaw and the surrounding area to live, work, or play.



## A BANK IS ALL ABOUT ITS PEOPLE.



- Free On-Line Banking
- Free Bill Pay
- Special Travel Opportunities
- Special CD Rates
- Loan Decision Made Locally



### ATM LOCATIONS

HAWTHORN BANK 1891 COMMERCIAL ST  
 BETH'S OSAGE MINI MART 915 E MAIN  
 WALMART 103 W POLK  
 DOWNTOWN WARSAW 200 W MAIN

North Town Banking Center  
 1891 Commercial,  
 Warsaw, MO 65355

### VIDEO TELLER

HAWTHORN BANK 1891 COMMERCIAL ST

*Hawthorn*  
 BANK®

Member  
 FDIC  
 NASDAQ: HWBK  
 NMLS# 409185

(660)438-2847  
 HawthornBank.com

Your Community Bank Since 1891

“There is no job too big or too small!”



“We do it ALL!”

**ROBERTS A+ SERVICE**

**660-723-2408**

# Warsaw Missouri Chamber of Commerce Member Directory

## AUTOMOTIVE

### **Bumper to Bumper**

1251 E Main St  
Warsaw, Mo. 65355  
660-438-5153

### **NAPA Auto & Marine**

1850 Commercial St.  
Warsaw, Mo. 65355  
660-438-2829

### **Gregg Smith Ford Lincoln Inc.**

1316 Price  
Clinton, Mo. 64735  
660-885-5505

### **Jim Falk Motors**

1201 N Second St.  
Clinton, Mo. 64735  
660-885-2277

### **Maples Ford**

900 E Main St.  
Warsaw, Mo. 65355  
660-438-7324

### **ProCom**

31768 Hwy 83  
Warsaw, Mo. 65355  
660-438-3000

### **Benton County Tire & Auto**

901 E Main St.  
Warsaw, Mo. 65355  
660-438-3100

### **Jason's Automotive**

805 Wood St.  
Warsaw, Mo. 65355  
660-438-2002

### **T & K Automotive LLC**

421 E. Main St.  
Warsaw, Mo. 65355  
660-438-3509

## BAIL BONDS & DRUG TEST

### **MCSST & Don Miller**

Bail Bonds  
601 Commercial St.  
Warsaw, Mo. 65355  
660-438-2727

## BANKS

### **Community National Bank**

1695 Hilltop Dr.  
Warsaw, Mo. 65355  
660-438-9554

### **Community National Bank**

101 US-65  
Lincoln, Mo 65338  
660-547-3311

### **Equity Bank**

100 E Main  
Warsaw, Mo. 65355  
660-438-4388

### **Hawthorn Bank**

1891 Commercial St.  
Warsaw, Mo. 65355  
660-438-2847

## BOAT DEALERS

### **Angler's Port Marine**

13979 Hwy 7  
Warsaw, Mo. 65355  
660-438-4600

## Truman Lake

### **Marine & Powersports**

23963 Hwy 65  
Warsaw, Mo. 65355  
660-438-6358

## BOAT RENTALS

### **Beyond Marine at Sterett Creek**

18174 Marina Rd.  
Warsaw, Mo. 65355  
660-438-2280

### **Long Shoal**

**Marina & Restaurant**  
12737 Steamboat Rd.  
Warsaw, Mo. 65355  
660-438-2841

### **Truman State Park Marina**

14950 State Park Road E.  
Warsaw, Mo. 65355  
660-438-2423

## GYMS/FITNESS

### **Main Street Fitness**

212 Seminary  
Warsaw, Mo. 65355  
660-723-6004

### **Meyer's Martial Arts Academy**

505 Jefferson  
Warsaw, Mo. 65355  
660-624-0798

### **Warsaw Fitness**

1507 Commercial St.  
Warsaw, Mo. 65355  
660-221-7128

## CHURCHES

### **Broken Vessels Ministries**

18708 Braden Rd.  
Warsaw, Mo. 65355  
207-266-2933

### **Faith Lutheran Church**

1201 Dogwood  
Warsaw, Mo. 65355  
660-438-6948

### **First United Methodist Church**

154 W Washington  
Warsaw, Mo. 65355  
660-438-6261

### **St. Ann's Catholic Church**

30455 W Dam Access Rd.  
Warsaw, Mo. 65355  
660-438-3844

### **Warsaw Assembly of God**

703 Elm Dr.  
Warsaw, Mo. 65355  
660-438-6244

### **Warsaw Bible Church**

16155 Waggoner Rd.  
Warsaw, Mo. 65355  
660-438-9539

### **Warsaw Christian Church**

320 State St.  
Warsaw, Mo. 65355  
660-438-5312

### **Warsaw First Baptist Church**

305 W Jefferson St.  
Warsaw, Mo. 65355  
660-438-6161

## COMMUNITY

## ORGANIZATIONS

### **Child Safe of Central Missouri**

16155 Waggoner Rd.  
Warsaw, Mo. 65355  
660-438-9539

### **Benton County Elks**

33495 Hwy MM  
Warsaw, Mo. 65355  
660-438-9498

### **Benton County Historical Society**

1660 Hilltop Dr.  
Warsaw, Mo. 65355  
660-438-2304

### **Boy Scouts Troop 34**

154 W Washington  
Warsaw, Mo. 65355  
660-723-0438

### **Family Resource Center of Warsaw (BFF)**

1651 Commercial St.  
Warsaw, Mo. 65355  
660-223-1867

### **Friends of Benton County Sheriff's Office**

27214 Hwy 00  
Warsaw, Mo. 65355  
417-967-6626

### **Hope 5 One**

Warsaw, Mo. 65355  
660-428-6002

### **Kaysinger Bluff Pioneer**

**Heritage Association**  
29027 Visitor Center Rd.  
Warsaw, Mo. 65355

816-805-2836

### **Knights of Columbus**

31687 Hwy 83  
Warsaw, Mo. 65355  
660-287-0197

### **Shawnee Lodge #653**

425 Benton St.  
Warsaw, Mo. 65355  
660-723-2536

### **Stepping Stones**

**Gardening Club**  
Warsaw, Mo. 65355  
484-797-9048

### **The Salvation Army**

**1623 Commercial St.**  
Warsaw, Mo. 65355  
660-620-8063

### **Warm House**

100 E. Long View Terrace  
Warsaw, Mo. 65355  
660-438-5633

### **Warsaw Athletic Booster Club**

Warsaw, Mo. 65355  
**Warsaw Jubilee Days**  
Warsaw, Mo. 65355

660-287-3302

### **Warsaw Lion's Club**

Warsaw, Mo. 65355  
816-916-5649

### **Warsaw Shrine Club**

Warsaw, Mo. 65355  
660-438-9750

## COMPUTER SERVICES

### **TronIQ**

101 W. Jackson  
Warsaw, Mo. 65355  
660-438-2093

## CONSTRUCTION & SERVICES

### **Cabinets/Countertops**

**Stoneage Marble & Granite**  
329 Seminary  
Warsaw, Mo. 65355  
660-373-0999

## CONCRETE

### **Fischer Concrete/Warsaw**

### **Ready Mix**

28709 Old HWY 7  
Warsaw, Mo. 65355  
660-438-9400

## ELECTRIC/PLUMBING

### **Advantage 1 Electric**

Warsaw, Mo. 65355  
660-723-0327

### **D&M Plumbing**

Warsaw, Mo. 65355  
660-747-7808

### **H&C Plumbing & Electrical**

1924 E. Main St.  
Warsaw, Mo. 65355  
660-596-1467

## HEAT & AIR CONDITIONING

### **All American**

### **Heating & Cooling**

1045 Main St.  
Warsaw, Mo. 65355  
660-438-3660

## HOME IMPROVEMENT

### **Attaboy Guttering and Metal Roofs**

PO Box 2012 Warsaw, Mo. 65355  
660-723-5840

### **Dunkin Construction**

Lincoln, Mo. 65338  
660-221-7889

### **Dickinson Roofing**

6125 E Hwy 50  
Sedalia, Mo. 65301  
660-826-7663

### **Lawrance Pollard Construction**

Warsaw, Mo. 65355  
816-616-7250

### **Nailings Home Improvement**

Warsaw, Mo. 65355  
660-438-2680

### **Rolling Perfection**

Warsaw, Mo. 65355  
417-288-9935

### **Steve's Guttering**

31980 Hwy 83  
Warsaw, Mo. 65355  
660-438-6381

## MODULAR HOMES

### **Pitts Homes**

29010 Old Hwy 65  
Warsaw, Mo. 65355  
660-438-2505

## SUPPLIES/TOOL RENTAL

### **Eichler Home**

### **Improvement Center**

16870 Swinging  
Bridge Rd.  
Warsaw, Mo. 65355  
660-438-9373

### **Golden Rule**

### **Lumber & Construction**

19894 McDaniel Rd.  
Warsaw, Mo. 65355  
660-547-0223

## WELLS/SEPTIC/EXCAVATING

### **Allen Pump Service**

32571 Hwy MM  
Warsaw, Mo. 65355  
660-438-7693

### **Danny Roellig Backhoe Service**

33283 Hilty Ave.  
Warsaw, Mo. 65355  
660-438-3002

### **Dean L Yoder & Sons**

Excavating, LLC  
33850 Yoder Ave.  
Warsaw, Mo. 65355  
660-723-1135

### **Do-Rite Construction**

17195 Hwy 65  
Lincoln, Mo. 65338  
660-547-2627

### **RNR Backhoe & Complete**

### **Septic LLC**

29421 Woodhaven Rd.  
Warsaw, Mo. 65355  
417-998-9019

### **Woodchuck Tree Service**

### **& Bull Dozing**

Warsaw, Mo. 65355  
573-789-6905

## WELDING & FABRICATION

### **Lakeside Metal Works LLC**

21172 Allen Rd.  
Warsaw, Mo. 65355  
660-438-1689

## CONVENIENCE STORE / BAIT

## & TACKLE

### **Beth's Osage Mini Mart**

915 E Main St.  
Warsaw, Mo. 65355  
660-438-0270

### **Cody's Bait & Tackle**

31046 Cold Springs Rd.  
Warsaw, Mo. 65355  
660-723-5115

### **D&P ICE LLC**

935b Main St.  
Warsaw, Mo. 65355  
573-345-4593





# TRUMAN LAKE DENTAL

DR. TERESA HILLS, DDS  
DR. IRWIN BOE, DDS  
DR. SAMANTHA SUTTON DDS  
Monday - Friday 8:00 AM to 5:00 PM

[www.trumanlakedental.com](http://www.trumanlakedental.com)

**660-438-5139**

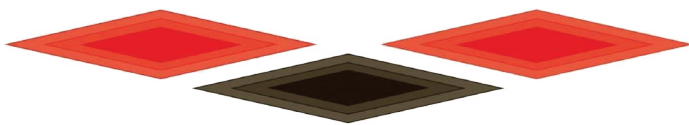
**Truman Hills Building**

1631 Commercial St., Warsaw, MO

**Providing high quality concrete to  
Missouri for more than 60 years.**

# FCS

FISCHER CONCRETE SERVICES



**(660) 438-9400**

**(660) 826-3122**

**(800) 352-1517**

641410cb

**2300 Clinton Road, Sedalia • 28709 Old Hwy 65, Warsaw**

# Warsaw Missouri Chamber of Commerce Member Directory

## **TnJ's Back Road Bait**

19155 Blake Rd..  
Warsaw, Mo. 65355  
660-251-1476

## **DOG GROOMING/**

## **TRAINING/SUPPLIES**

## **The Yuppy Puppy**

185 Main St. Warsaw, Mo.  
65355

660-428-2438

## **Twin Lakes K-9 Academy**

12049 Hwy 7  
Deepwater Mo. 64740  
660-438-2385

## **EDUCATION/LIBRARY/**

## **GOVERNMENT**

## **Benton County Economic Development**

181 Harrison St.  
Warsaw, Mo. 65355  
660-492-3402

## **Benton County Health Department**

1238 Commercial  
Warsaw, Mo. 65355  
660-438-2876

## **Boonslick Regional Library**

102 E Jackson  
Warsaw, Mo. 65355  
660-438-5211

## **City of Warsaw**

201 Main St.  
Warsaw, Mo. 65355  
660-438-5522

## **Growing Mind Tutoring Center**

303 Seminary  
Warsaw, Mo. 65355  
660-238-1792

## **Harry S Truman Project Office**

## **CORP of Engineers**

15968 Truman  
Dam Access Road  
Warsaw, Mo. 65355  
660-438-7313

## **Icarus Aviation**

19283 Airport Ln.  
Warsaw, Mo. 65355  
660-473-3704

## **Lost Valley Hatchery**

28232 Hatchery Ave  
Warsaw, Mo. 65355  
660-438-4465

## **State Fair**

## **Community College**

3201 W 16th St.  
Sedalia, Mo. 65301  
660-596-7223

## **Warsaw R-IX School District**

220363 Lane of Champions  
Warsaw, Mo. 65355  
660-438-7120

## **FINANCIAL/TAX SERVICE**

## **Edward Jones-Caswell**

1620 Commercial  
Warsaw, Mo. 65355  
660-438-2642

## **Fortress Wealth Advisors**

1621 Commercial St.  
Warsaw, Mo. 65355  
660-383-9099

## **H & R Block**

1878 Commercial St.  
Warsaw, Mo. 65355  
660-438-6622

## **Johnson Tax Service**

201 Hwy 65 S.  
Lincoln, Mo. 65338  
660-547-3332

## **Secure Retirement Planners**

1300 Commercial St.  
Warsaw, Mo. 65355  
660-438-6056

## **Tracy Spry & Associates CPA P.C.**

304 W Main St.  
Warsaw, Mo. 65355  
660-438-7992

## **World Finance Group**

187 Main St.  
Warsaw, Mo. 65355  
660-428-1293

## **FIREPLACE & CHIMNEY**

## **Ozark Chimney & Fireplace**

420 Commercial St.  
Warsaw, Mo. 65355  
660-438-7734

## **FIREWORK SALES**

## **Kovac Fireworks**

31487 Hwy 83  
Warsaw, Mo. 65355  
660-438-7778

## **FISHING GUIDE SERVICE**

## **Smith Fishing Adventures**

573-268-4082

## **FLOWER SHOPS**

## **Warsaw Flower Shop**

420 Commercial St.  
Warsaw, Mo. 65355  
660-438-5731

## **FUNERAL HOMES**

## **Reser Funeral Home**

101 Main St.  
Warsaw, Mo. 65355  
660-438-5151

## **FURNITURE SALES**

## **Lakeside Sales**

19485 Airport Ln.  
Warsaw, Mo. 65355  
660-553-1877

## **GUNSTOCKS**

## **Show-Me Gunstocks**

19557 Quail Ridge Rd.  
Warsaw, Mo. 65355  
660-438-4568

## **HAIR SALONS**

## **HAIR**

28779 Ceder Hill Loop  
Warsaw, Mo. 65355  
816-419-9459

## **The Look Salon**

420 B Commercial  
Warsaw, Mo. 65355  
660-438-9050

## **Studio 86 Salon & Spa**

1634 E Main  
Warsaw, Mo. 65355  
660-438-8686

## **HEALTH & WELLNESS**

## **Benton County Health Department**

1238 Commercial St.  
Warsaw, Mo. 65355  
660-438-2876

## **Remember to Dream Therapeutic Riding Center**

25388 Hwy 52  
Cole Camp, Mo. 65325  
660-287-3781

## **Vollara Activepure**

2925 W Cordelia  
Tampa, Fl. 33607  
660-635-0805

## **INSURANCE**

## **American Family Insurance**

## **Jeanette Limback**

1894 E Main St.  
Warsaw, Mo. 65355  
660-438-7714

## **CFM Insurance**

1202 SE 1st St  
Concordia, Mo. 64020  
660-463-2223

## **Fajen Insurance**

601 Commercial St.  
Suite 1  
Warsaw, Mo. 65355

660-438-3800

## **Farmers Insurance**

## **Shawn Poyser**

1650 Commercial St.  
Suite A  
Warsaw, Mo. 65355

660-438-8898

## **Fortress Insurance**

1110 E. Ohio St.  
Clinton, Mo. 64735  
660-525-9261

## **Mike Keith Insurance**

103 W Franklin St.  
Clinton Mo. 64735  
660-885-5582

## **Mill's & Sons Inc**

212 Commercial St.  
Warsaw, Mo. 65355  
660-438-7379

## **Missouri Farm Bureau Insurance**

177 W Main St.  
Warsaw, Mo. 65355  
660-438-9037

## **State Farm-Brodersen**

1605 Sunchase Dr.  
Warsaw, Mo. 65355  
660-438-7472

## **LEGAL**

## **Dull & Heany LLC**

220 W Main St.  
Warsaw, Mo. 65355  
660-885-9600

## **Mosley Law Office**

601 Commercial St.  
Suite #3  
Warsaw, Mo. 65355  
660-530-0103

## **LICENSE BUREAU**

## **Benton County Licence Office**

237 Main St.  
Warsaw, Mo. 65355  
660-438-0025

## **LIQUOR STORE**

## **Main Street Spirits**

1027 E Main  
Warsaw, Mo 65355  
660-438-2323

## **LODGING**

## **CABINS**

## **Hidden Oaks Ranch**

20918 Doe Trail  
Warsaw, Mo. 65355  
660-723-6400

## **Parkside Cabin**

29030 State Hwy UU  
Warsaw, Mo. 65355  
660-723-5245

## **R&C Adventures**

12049 Hwy 7  
Warsaw, Mo. 65355  
660-438-5933

## **HOTEL/MOTEL**

## **Grand River Resort**

11919 Hwy 7  
Warsaw, Mo. 65355  
660-438-2743

## **Lakes Inn**

1603 Commercial St.  
Warsaw, Mo. 65355  
660-438-2882

## **Osage Bluff Marina & Motel**

17393 Osage Bluff Rd.  
Warsaw, Mo. 65355  
660-438-2891

## **Parkfield Inn**

151 N Dam Access Rd.  
Warsaw, Mo. 65355  
660-438-2474

## **Sundown Motor Lodge**

23339 Hwy 65  
Lincoln, Mo. 65338  
660-547-3020

## **Uncle Gabby's Motel**

10825 Hwy 7  
Clinton Mo. 64735  
660-477-3331

## **RV/CAMPGROUNDS**

## **Angler's Retreat RV Park**

32831 Hwy MM  
Warsaw, Mo. 65355  
660-492-2670

## **Benton Ridge**

## **Winery & Campground**

25518 Fitzpatrick Ave.  
Warsaw, Mo. 65355  
660-776-9463

## **Deer Rest Campground**

807 Gasoline Alley  
Warsaw, Mo. 65355  
660-438-6005

## **EdgeWater RV Park**

20424 Raintree Rd.  
Warsaw, Mo. 65355  
660-438-0203

## **Harry S Truman State Park**

28761 State Park  
Road West  
Warsaw, Mo. 65355  
660-438-7711

## **Lakeview RV Park**

14231 Hwy 7  
Warsaw, Mo. 65355  
660-438-6373

## **Pecan Grove Campground**

30249 W Dam Access Rd.  
Warsaw, Mo. 65355  
660-438-7688

## **Beyond Marine at Sterett Creek**

18174 Marina Rd.  
Warsaw, Mo. 65355  
660-438-2280

## **MARINAS**

## **Long Shoal**

## **Marina & Restaurant**

12737 Steamboat Rd.  
Warsaw, Mo. 65355  
660-438-2841

## **Osage Bluff Marina & Motel**

17393 Osage Bluff Rd.  
Warsaw, Mo. 65355  
660-438-2939

## **Beyond Marine at Sterett Creek**

18174 Marina Rd.  
Warsaw, Mo. 65355  
660-438-2280

## **Truman State Park Marina**

14950 State Park Road E.  
Warsaw, Mo. 65355  
660-438-2423

## **MEDIA**

## **Benton County Enterprise**

107 Main St. Warsaw, Mo  
65355  
660-438-6312

## **KPOW Power 97.7**

301 S Ohio Ave.  
Sedalia, MO. 65301  
660-826-5005

## **Radford Media Group (KDKD)**

2201 N Antioch  
Clinton, Mo. 64735  
660-885-6141

## **Townsquare Media (KIX 105.7)**

2209 S. Limet Ave.  
Sedalia, MO. 65301  
660-826-1050

## **MEDICAL**

## **CHIROPRACTIC**

## **Back in Action Chiropractic**

1650 Commercial St.  
Warsaw, Mo. 65355





**We've Got Tires!**

CAR • TRUCK • LAWN MOWER • TRACTOR

**WE DO IT ALL!**

**Firestone**

**TIRES**



**LUBE**



**EXHAUST**



**ALIGNMENTS**

**BRAKES**

901 E. Main • Warsaw, MO

438-3100



**Being there is why I'm here.**

Suzie Brodersen, Agent  
1605 Sunchase Drive  
Warsaw, MO 65355  
Bus: 660-438-7472  
suzie.brodersen.102m@statefarm.com

Whether you need a question answered, a problem solved, or a claim reported, my job is to make it happen.

**Like a good neighbor, State Farm is there.®**

**CALL ME TODAY.**



P097193.1

State Farm, Home Office, Bloomington, IL



**Your Tri-lake  
Electrical Experts**

**ADVANTAGE 1**

**660.723.0327 Electric**

**AMAZING SERVICE with prices that WON'T SHOCK YOU!**

# Warsaw Missouri Chamber of Commerce Member Directory

660-223-0199

**Porter Chiropractic Clinic**  
122 W Washington St.  
Warsaw, Mo. 65355  
660-438-5511

## **CLINICS**

**Bothwell Regional Health Center**  
1765 Commercial St.  
Warsaw, Mo. 65355  
660-826-8833

**Golden Valley Clinic**  
1771 Commercial St.  
Warsaw, Mo. 65355  
660-438-5193

## **DENTAL**

**Truman Lake Dental**  
1631 Commercial St.  
Warsaw, Mo. 65355  
660-438-5739

**Katy Trail Community Health**  
17571 N Dam Access Rd.  
Warsaw, Mo. 65355  
660-438-2717

## **FIRST AID / CPR TRAINING**

**Saving Hearts CPR & First Aid Training**  
624 E. Main St.  
Warsaw, Mo. 65355  
660-723-0731

## **HOSPICE**

**Heartland/Promedica Hospice**  
150 S. Limit Ave Suite 400  
Sedalia, Mo. 65301  
660-530-3040

**Twin Lakes Hospice**  
725 E Ohio St.  
Warsaw, Mo. 65355  
660-890-2014

## **PHARMACY**

**Boring Rexall Drug**  
161 W Main St.  
Warsaw, Mo. 65355  
660-438-5162

**J&D Pharmacy**  
1330 Commercial St.  
Warsaw, Mo. 65355  
660-438-7331

## **TRANSPORT**

**Air Medicare NetWork**  
511 State Fair Blvd  
Sedalia, MO. 65301  
660-730-1925

**Warsaw-Lincoln Ambulance District**  
1206 Medic Dr.  
Warsaw, Mo. 65355  
660-438-2993

## **OFFICE LEASE EQUIPMENT**

**Da-Com Columbia LLC**  
2602A N. Stadium Blvd  
Columbia, Mo. 65203  
573-449-2663

## **OUTDOOR RECREATION/OUT-FITTERS**

**Freedom Eagle Land Services**  
27494 Hwy V  
Edwards, Mo. 65326  
660-689-6658  
**Lucas Oil Speedway**  
18842 Speedway Dr.  
Wheatland, Mo. 65779  
417-282-5984

## **PARTY RENTAL/DRESS SHOP**

**Evenings Only Formal Wear Boutique**  
22538 Hwy BB  
Warsaw, Mo. 65355  
660-281-2312  
**Main Event Wedding Boutique**  
117 E Main St.  
Warsaw, Mo. 65355  
660-428-2480

## **PEST CONTROL**

**Jerry's Pest Management**  
702 S. Main  
Clinton, Mo. 64735  
660-885-5378  
**Steve's Pest Control**  
190 N Greenway Dr.  
Holts Summit, Mo.  
573-896-4868

## **PHOTOGRAPHY**

**Land Sand And Sea Photography**  
226 W Main St.  
Warsaw, Mo. 65355  
660-223-2219

## **QUILT SHOPS**

**At the Lake Quilt Shop**  
31958 Hwy 83  
Warsaw, Mo. 65355  
660-223-2175  
**City's Edge**  
616 Main St.  
Warsaw, Mo. 65355  
660-438-3177

## **REALTY & AUCTION**

**Advantage Real Estate**  
1699 A Commercial St  
Warsaw, Mo. 65355  
660-438-0070  
**Anstine Realty & Auction, LLC**  
1649 Commercial St. Suite #4  
Warsaw, Mo. 65355  
660-438-7000  
**Crawford Auction Service, LLS**  
23719 US Hwy 54  
Hermitage, Mo. 65668  
417-399-1904  
**Forbes Lake of the Ozarks**

## **Park**

26506 Gardiner Rd.  
Edwards, Mo. 65326  
660-438-4039  
**Johnson Auction Service**

## **Keller Williams Heritage**

14087 Hwy 65  
Cole Camp, Mo 65325  
660-473-4167  
**Lincoln Realty**  
546 N Hwy 65  
Lincoln, Mo. 65338  
660-547-3535  
**Missouri Land Company LLC**  
14981 Centerline Ave.  
Cole Camp, Mo 65325  
660-668-4868

**Reece Nichols Golden Key Realty**  
18889 Cedar Gate Dr.  
Warsaw, Mo. 65355  
660-438-7228

**Remax of Warsaw**  
805 Kennedy Dr.  
Warsaw, Mo. 65355  
660-438-7100

**Drake Land Title Company**  
167 W Main St.  
Warsaw, Mo. 65355  
660-438-5188

## **REALTY HOME INSPECTORS**

**Pillar To Post Home Inspectors**  
Warsaw, Mo. 65355  
660-223-1794

## **RENTAL PROPERTIES**

**Ace Elite Properties**  
Warsaw, Mo. 65355  
816-679-7010

## **RESIDENTIAL FACILITY**

**SKILLED NURSING Lincoln Community Care Center**  
205 Timberline Dr.  
Lincoln, Mo 65338  
660-547-3322

**Warsaw Health & Rehab**  
1609 Sunchase Dr.  
Warsaw, Mo. 65355  
660-438-2970

## **RESIDENTIAL CARE FACILITY ASSISTED**

**Heart Core LLC Lakeside Manor**  
802 Kennedy Dr.  
Warsaw, Mo. 65355  
660-438-8850

## **RESTAURANTS, BARS & FOOD**

**BACK IN TIME HEADQUARTERS**  
234 W. MAIN  
WARSAW, MO. 65355  
573-619-5557

**Buck Naked Restaurant Bar & Marina**  
29580 Waters Edge Rd.  
Lincoln, Mo. 65338  
660-668-2003

**Cosmic Café**  
504 W Main St.  
Warsaw, Mo. 65355  
660-438-6171

**Dam Restaurant & Lounge**  
801 Kennedy Dr.  
Warsaw, Mo. 65355  
660-438-3060

**Drake Harbor Trading Co**  
221 Main St.  
Warsaw, Mo. 65355  
816-213-6626

**El Camino Real**  
120 W Polk  
Warsaw, Mo. 65355  
660-438-9994

**G&W Grocery**  
1000 E Main St.  
Warsaw, Mo. 65355  
660-438-5179

## **Long Shoal**

**Marina & Restaurant**  
12737 Steamboat Rd.  
Warsaw, Mo. 65355  
660-438-2841

**McDonald's**  
1890 Commercial St.  
Warsaw, Mo. 65355  
660-827-0285

**My Secret Garden**  
420 Commercial St.  
Warsaw, Mo. 65355  
660-438-5731

**Nee Nee's Italian Restaurant**  
324 W Main St.  
Warsaw, Mo. 65355  
660-438-4421

**Nix Horseshoe Bar**  
312 Benton St.  
Warsaw, Mo. 65355  
660-723-9016

**R&R BBQ {Custom Cooking}**  
10966 Hwy 7  
Clinton Mo. 64735  
816-223-3762

**Red Wing Coffee**  
936 E Main St.  
Warsaw, Mo. 65355  
660-438-9424

**Sonic Drive-In**  
2003 Commercial St.  
Warsaw, Mo. 65355  
660-438-6200

**Subway**  
1886 Commercial St.  
Warsaw, Mo. 65355  
660-438-4234

**Taco Villa**  
1695 Hilltop Dr.  
Warsaw, Mo. 65355  
660-438-6027

**The Landing Lounge & Bistro**  
305 W Main St.  
Warsaw, Mo. 65355  
660-438-4150

**The Fix Coffee**  
1700 Commercial  
Warsaw, Mo. 65355

**The Rusty Skillet**  
248 W Main St.  
Warsaw, Mo. 65355  
660-438-7660

**The Yellow Deli**  
145 W Main St.  
Warsaw, Mo. 65355  
660-438-2581

**Anne's Acres**  
20521 Fordney  
Lincoln, Mo. 65338  
660-221-7978

**Breshears Farm, LLC**  
Warsaw, Mo. 65355  
660-619-7994

**Pasture to Patio**  
Warsaw, Mo. 65355  
816-288-2050

## **FOOD TRUCKS**

**Ice Ice Crazy**  
Warsaw, Mo. 65355  
660-723-5500

**Munch Truck**  
Warsaw, Mo. 65355  
S&B Kettlecorn  
Warsaw, Mo. 65355  
660-723-1441

## **RETAIL**

**Country Charm**  
109 E. Main St.  
Warsaw, Mo. 65355  
660-596-1023

**Creative Palette**  
216 W. Main  
Warsaw, Mo. 65355  
417-664-5703

**Drake Harbor Trading Co.**  
221 Main St. Warsaw, Mo.  
65355  
816-213-6626

**Little Bit of Everything**  
818 E Main St.  
Warsaw, Mo. 65355  
660-473-3245

**Orscheln's Farm & Home**  
1551 Commercial St.  
Warsaw, Mo. 65355  
660-438-3150

**Statuary Gardens Boutique**  
233 W Main St.  
Warsaw, Mo. 65355  
660-359-1812

**The Landing Bistro and Lounge**  
305 W Main St  
Warsaw, Mo. 65355  
660-438-2732



Spray Foam Insulation and  
Concrete lifting.

Residential, Commercial, & Agricultural



31980 Hwy 83  
Warsaw, MO 65355  
660-428-3107

[www.akfoamenterprises.com](http://www.akfoamenterprises.com)

4/20

# Warsaw Flower & Gift Shop

420 Commercial Street  
Warsaw, MO 65355  
660-438-5731

Hometown Florist Since 1956  
All Major Credit Cards Accepted

**Liz Hollingsworth, Owner**

See Us For All Your Floral & Gift Needs

# ANSTINE



## REALTY & AUCTION



LLC

### YOUR HOMETOWN REALTY & AUCTION COMPANY

1649 COMMERCIAL ST., STE 4 WARSAW, MO 65355  
660-438-7000



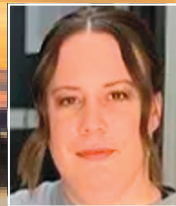
**Lora Anstine**  
Owner/Broker  
660-525-9914  
[lora@anstinerrealty.com](mailto:lora@anstinerrealty.com)  
[lora@anstinerrealty.com](mailto:lora@anstinerrealty.com)



**Debra Anderson**  
Sales Associate  
660-233-3673  
[thedebranderson@yahoo.com](mailto:thedebranderson@yahoo.com)



**Cathy Wilson**  
Sales Associate  
(816) 898-7645  
[cathywlsn16@gmail.com](mailto:cathywlsn16@gmail.com)



**Holly Hatzenbuehler**  
Sales Associate  
660-723-2291  
[hollyhatzenbuehler@outlook.com](mailto:hollyhatzenbuehler@outlook.com)



**Tonya Nathan**  
Sales Associate  
(660) 281-9361  
[tonyanathan@yahoo.com](mailto:tonyanathan@yahoo.com)



**Danielle Baker**  
Sales Associate  
(816) 918-3657  
[danielleshomes4u@gmail.com](mailto:danielleshomes4u@gmail.com)

# Don't Pass Us - BUY!

**Little Bit of Everything**

818 E Main St.  
Warsaw, Mo. 65355  
660-473-3245

**Bomgaars**

1551 Commercial St.  
Warsaw, Mo. 65355  
660-438-3150

**Statuary Gardens****Boutique**

233 W Main St.  
Warsaw, Mo. 65355  
660-359-1812

**The Landing****Boutique**

305 W Main St  
Warsaw, Mo. 65355  
660-438-2732

**Thrift 4 Life**

1220 Commercial St.  
Warsaw, Mo. 65355  
660-438-9140

**Warsaw Antique Mall**

245 Main St.  
Warsaw, Mo. 65355  
660-438-9754

**Walmart**

103 W Polk  
Warsaw, Mo. 65355  
660-438-7394

**RV SALES & SERVICE****Dan's RV LLC**

29553 Polk Ave  
Warsaw, Mo. 65355  
660-438-2961

**Weekender RV**

19157 Irish Rd.  
Clinton, Mo. 64735  
660-723-3534

**Wilder RV**

1011 Clark St.  
Warsaw, Mo. 65355  
660-885-6177

**SCREENPRINTING/SIGNS****Birdman Apparel**

107 Main St.  
Warsaw, Mo. 65355  
660-723-0550

**Tightwad Tees**

983 SE 450 Rd.  
Clinton, Mo. 64735  
660-525-0336

**SECURITY****ATI Security**

121 Brown Bend  
Edwards, Mo. 65326  
816-237-8038

**SENIOR CENTER****Care Connection**

17571 N Dam Access Rd.  
Warsaw, Mo. 65355  
660-438-3300

**SOCIAL SERVICE PROVIDERS****Center for Human Services**

1500 Ewing Dr.  
Sedalia, Mo. 65301  
660-826-4400

**City Union Mission-****Opportunity Farm**

12947 Hwy Z  
Warsaw, Mo. 65355  
660-438-5092

**West-Central Independent****Living Solutions**

1330 Commercial St #100B.  
Warsaw, Mo 65355  
660-422-7883

**STORAGE****Basswood Boat Storage**

10607 Durk Rd.  
Warsaw, Mo. 65355  
660-438-8460

**C&J Storage**

1221 Dogwood  
Warsaw, Mo. 65355  
660-438-6550

**Hawk Pointe Storage**

32789 Hilty Ave.  
Warsaw, Mo. 65355  
573-424-6623

**TOURISM****Benton County****Tourism & Recreation**

181 Harrison St.  
Warsaw, Mo. 65355  
660-438-2090

**TRANSPORTATION****Bus-Da-Move LLC**

Warsaw, Mo. 65355  
660-723-6052

**UTILITIES****Pinnacle Propane**

801 E Main St.  
Warsaw, Mo. 65355  
660-438-6118

**Ozark Disposal**

32386 MO-MM  
Warsaw, Mo. 65355  
660-438-6467

**People Service Inc**

1255 Tamara Ln.  
Warsaw, Mo. 65355  
660-723-3115

**Southwest Electric Cooperative**

Bolivar, Mo. 65613  
800-262-0326

**Zollicker Gas, Oil, Diesel**

937 E Main St.  
Warsaw, Mo. 65355  
660-435-5331

**VETERANS ORGANIZATIONS****American Legion****Post 217**

32739 Hwy MM  
Warsaw, Mo. 65355  
660-438-6928

**Warsaw Leathernecks**

607 Jefferson St.  
Warsaw, Mo. 65355  
660-651-1874

**WATER SYSTEMS****Culligan**

1220 W Main St.  
Sedalia, Mo. 65301  
660-827-2770

# INSURANCE DESIGNED WITH YOU AND YOUR DREAMS IN MIND.

LET'S DISCUSS HOW I CAN PROTECT YOUR DREAMS. CALL ME TODAY AT (660) 438-7714.



Whitney Day, Customer Loyalty Specialist  
for Jeanette Limback, Agent

1894 E Main St  
Warsaw, MO 65355  
wday@amfam.com



American Family Mutual Insurance Company,  
S.I. & its Operating Companies,  
6000 American Parkway, Madison, WI 53783  
©2015 006441 – Rev. 5/23 – 21121813



# WE'RE HERE

## FOR YOU IN BENTON COUNTY

At Bothwell Regional Health Center, we believe regular visits to a trusted family medicine physician or nurse practitioner can give you better health outcomes by helping you prevent and detect disease, treating your illnesses and injuries and managing your serious health conditions ... all close to home.

Bothwell's three Benton County clinics means you have options. And, with a family provider, you get more than health care, you get a relationship.

We're here for your long-term health in Benton County.

### **Bothwell Health Center-Truman Lake**

Monday — 8 am to 5 pm

Tuesday— Friday, 8 am to 4 pm

660.438.6800

1765 Commercial St., Warsaw

### **Bothwell Cole Camp Clinic**

Monday — Friday, 8 am to 5 pm

660.668.4411

1201 E. Main, Cole Camp

### **Bothwell Lincoln Family Medicine**

Monday — Friday, 8 am to 5 pm

660.547.3915

302 N. Hwy 65, Lincoln



Bothwell Health Center-Truman Lake



Bothwell Cole Camp Clinic



Bothwell Lincoln Family Medicine

**SCHEDULE YOUR  
VISIT TODAY AT  
YOUR LOCAL CLINIC  
OR VISIT BRHC.ORG  
TO LEARN MORE**

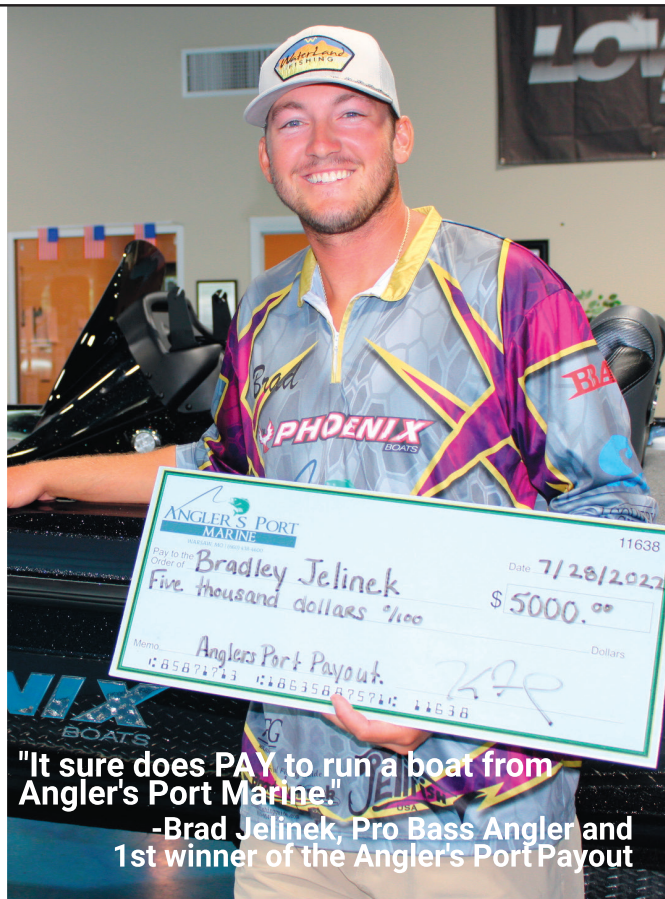


# YOU TOO CAN GET PAID TO FISH

## Just Ask These Winners

### THE ANGLER'S PORT PAYOUT PAYS BASS and CRAPPIE ANGLERS CASH WHEN THEY WIN 1st PLACE.

Rules and restrictions apply. See website for details.



"It sure does PAY to run a boat from Angler's Port Marine!"

-Brad Jelinek, Pro Bass Angler and 1st winner of the Angler's Port Payout



"Thank you Angler's Port Payout. I sure do love my APM family."

-Andy Newcomb, Pro Bass Angler and 2nd winner of the Angler's Port Payout

In 2023, the ANGLER'S PORT PAYOUT is open to any Angler's Port Marine Customer fishing out of their Phoenix, Caymas or Lowe Boat, 2 years or newer, in select tournaments with 60+ boats.

**\$5,000 PAYOUT** to 1st place winners of these select tournaments.

**\$10,000 PAYOUT** to 1st place winners of the Angler's In Action tournaments.

## ANGLER'S PORT MARINE

13979 Highway 7, Warsaw, MO

☎ 660.438.4600 🌐 [anglersportmarine.com](http://anglersportmarine.com)





**COMMUNITY  
NATIONAL  
BANK & TRUST**



[www.mybankcnb.com](http://www.mybankcnb.com)

**YOUR COMMUNITY.  
YOUR BANK.  
YOUR RELATIONSHIP.**

- Leases • Credit & Debit Cards • Estate Planning & Trust Services
- Real Estate & Auto Loans • Checking & Savings Accounts
- Business Financing • Online & Mobile Banking
- Machinery & Equipment Loans

NMLS ID #409138



**Stop by to open an account today!**

